



Price

£250,000

Freehold

2x  1x  1x 

**Mountbatten Drive,
Newport, Isle of Wight,
PO30**

OVER 60?

Secure this property
for up to **59% less!**

Pittis 
Helping you move forwards



Main features

- Lovely bungalow set back off the road
- Good size kitchen overlooking the rear garden
- Open plan lounge and dining area
- Great location on the outskirts of Newport within easy reach of the local shops

Accommodation

GROUND FLOOR

Entrance Hallway

Lounge: 16'4 x 11'3 (4.98m x 3.43m)

Kitchen: 12'1 x 9'6 (3.69m x 2.90m)

Bedroom 1: 12'2 x 10'4 (3.71m x 3.15m)

Bedroom 2: 16'4 x 7'4 (4.98m x 2.24m)

Bathroom

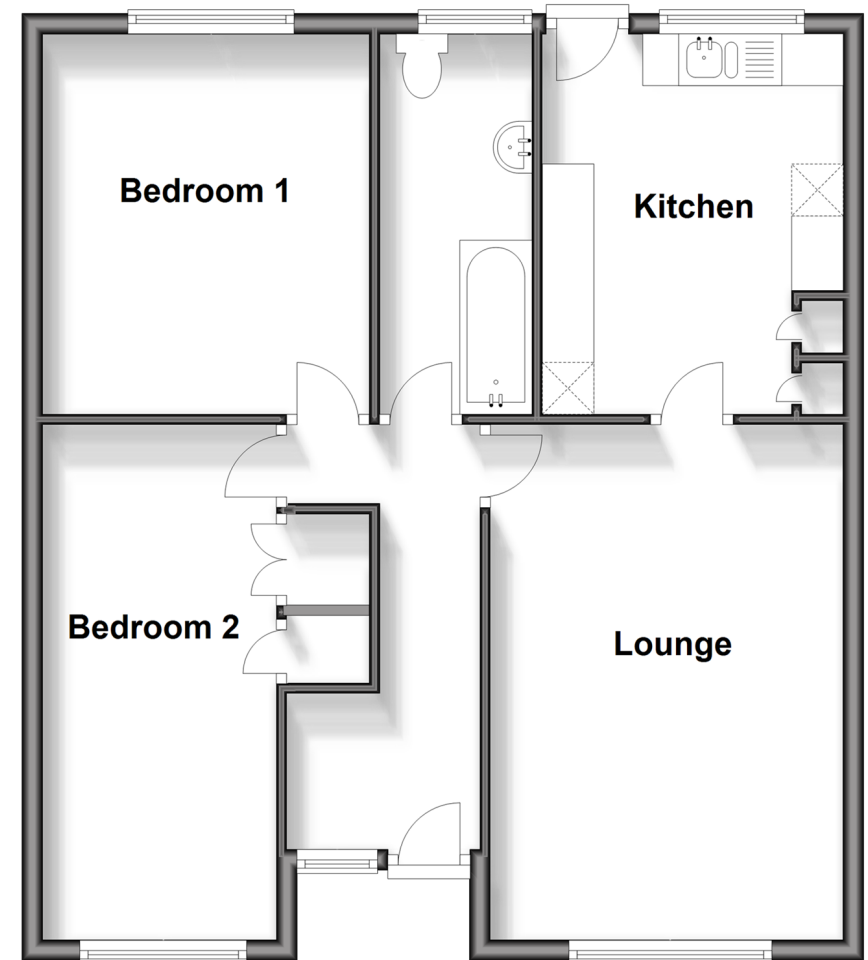
OUTSIDE

Front & Rear Gardens

Garage & Driveway

Ground Floor

Approx. 66.1 sq. metres (711.4 sq. feet)



Call Newport - 01983 528888 ■ pittis.co.uk

- Legal advice should be taken to verify fixtures/fittings, planning, alterations and/or lease details
- Appliances & services are untested, dimensions are approximate and floor plans are not to scale
- Through a Homewise Home For Life Plan people aged 60+ can secure this property for up to 59% less, by purchasing a Lifetime Lease.



60323612/20240320/SH/NH