



**OVER 60?**

Secure this property  
for up to **59% less!**

**Price**  
**£315,000**

**Freehold**

3x  1x  2x 

**Alfred Street, Ryde, Isle  
of Wight, PO33**

**Pittis**   
Helping you move forwards





## Main features

- Beautifully presented semi detached house
- Kitchen / dining room - perfect for entertaining family and friends
- Spacious rear garden to have summer bbq's
- Ideal family home close to local primary and secondary schools

## Accommodation

### GROUND FLOOR

Entrance Porch  
Hallway  
Lounge: 12'2 x 10'9 (3.71m x 3.28m)  
Kitchen / Dining Room: 18'6 x 14'0 (5.64m x 4.27m)  
Cloakroom

### FIRST FLOOR

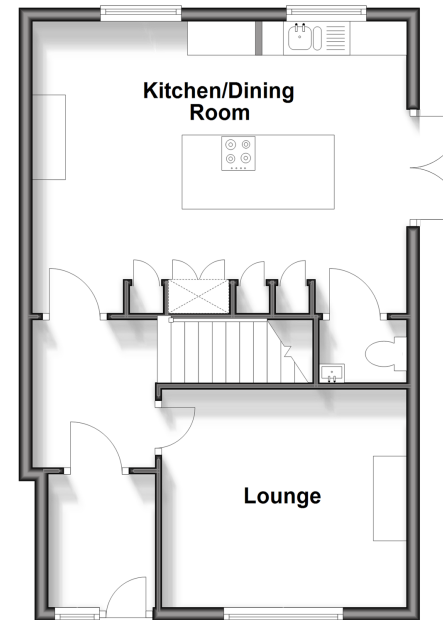
Landing  
Bedroom 1: 10'8 x 10'7 (3.25m x 3.23m)  
Bedroom 2: 11'3 x 9'3 (3.43m x 2.82m)  
Bedroom 3: 11'3 x 8'11 (3.43m x 2.72m)  
Bathroom: 10'0 x 5'10 (3.05m x 1.78m)

### OUTSIDE

Front Garden  
Rear Garden

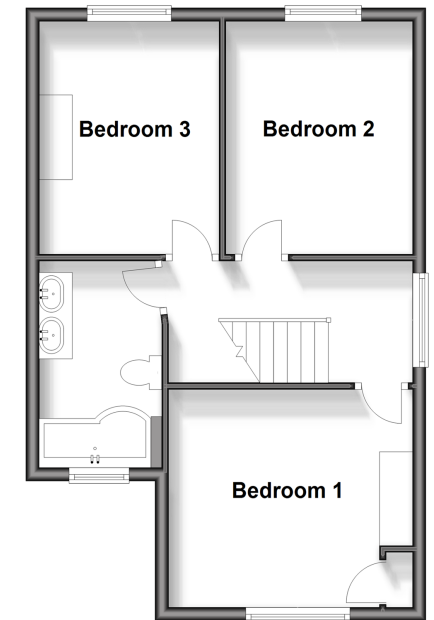
### Ground Floor

Approx. 48.1 sq. metres (518.0 sq. feet)



### First Floor

Approx. 44.6 sq. metres (480.1 sq. feet)



**Call Ryde - 01983 564646 ■ pittis.co.uk**

■ Legal advice should be taken to verify fixtures/fittings, planning, alterations and/or lease details  
■ Through a Homewise Home For Life Plan people aged 60+ can secure this property for up to 59% less, by purchasing a Lifetime Lease.

■ Appliances & services are untested, dimensions are approximate and floor plans are not to scale