



Price
£460,000

Freehold

4x  2x  2x 

**Hornbeam Square,
Bullen Village, Ryde, Isle
of Wight, PO33**

OVER 60?

You could get up to
59% off the price!*

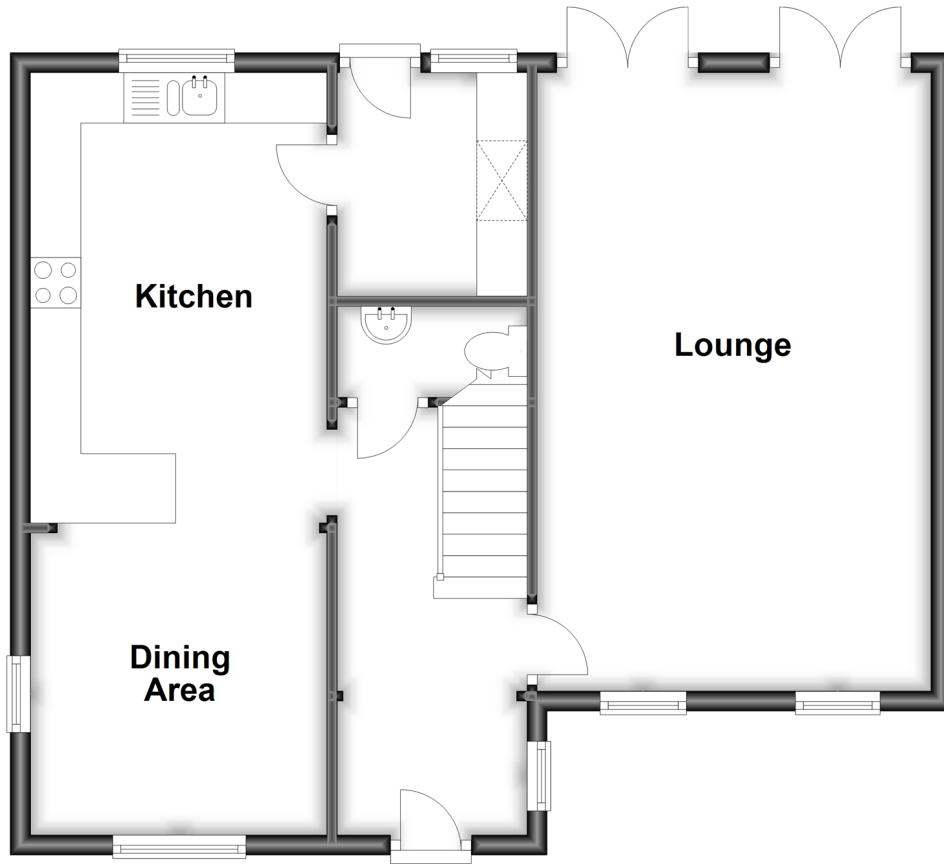


Video Tour available

Pittis 
Helping you move forwards

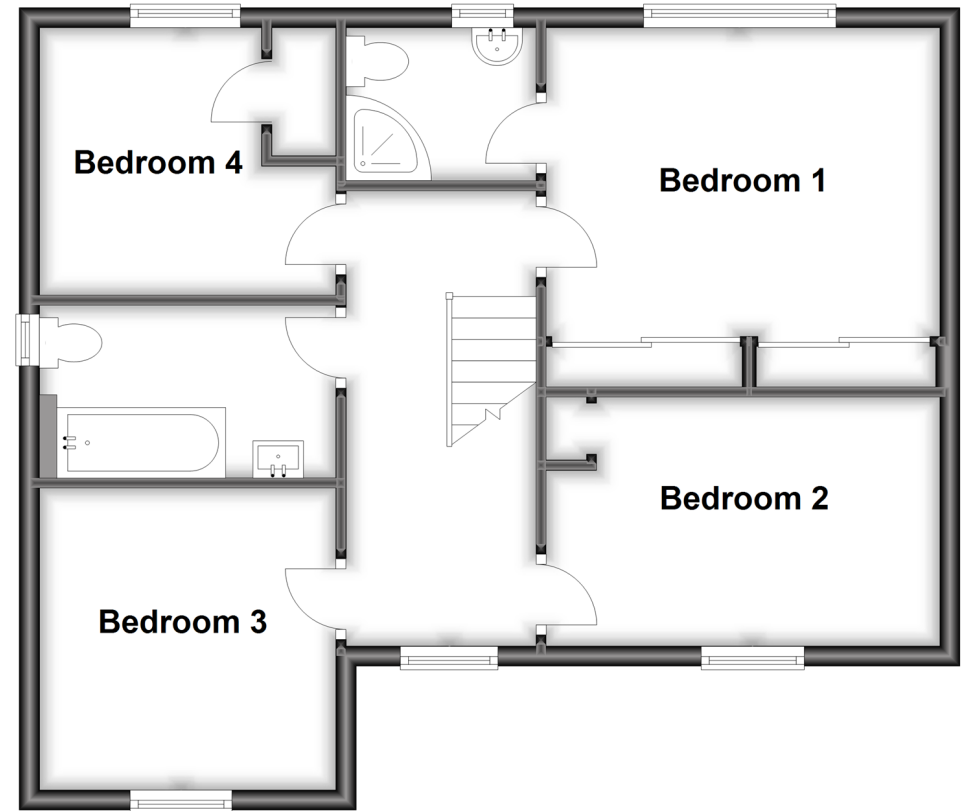
Ground Floor

Approx. 61.7 sq. metres (664.2 sq. feet)



First Floor

Approx. 58.9 sq. metres (633.7 sq. feet)



Accommodation

GROUND FLOOR

Hall

Kitchen/Diner: 25'5 x 9'7 (7.75m x 2.92m)

Cloakroom: 5'6 x 2'10 (1.68m x 0.86m)

Utility Room: 7'2 x 6'1 (2.19m x 1.86m)

Lounge: 20'1 x 12'8 (6.13m x 3.86m)

FIRST FLOOR

Bedroom 1: 12'11 x 12'11 (3.94m x 3.94m)

En-Suite: 6'3 x 4'10 (1.91m x 1.47m)

Bedroom 2: 9'10 x 9'7 (3.00m x 2.92m)

Bedroom 3: 12'11 x 8'0 (3.94m x 2.44m)

Bedroom 4: 9'7 x 8'8 (2.92m x 2.64m)

Bathroom: 9'7 x 6'2 (2.92m x 1.88m)

OUTSIDE

Double Garage: 16'0 x 14'6 (4.88m x 4.42m)

Off-Road Parking

Front and Rear Gardens



Main features

- A substantial detached house in an exclusive location
- Double garage and ample off road parking
- Sunny, peaceful rear garden
- Flexible accommodation including 2 bathrooms & a separate utility room
- No passing traffic due to being located in a quiet cul de sac



Nearest Schools

Oakfield C of E Primary School
St Mary's Catholic Primary School
Dover Park Primary School
Haylands Primary School
Ryde Academy 6th Form School



Transport Information

Local bus routes providing island wide connections.



Address

Hornbeam Square, Bullen Village, Ryde, Isle of Wight,
PO33



Directions

For directions to this property please contact us.

