



**Price**

**£299,000**

**Freehold**

2x  1x  1x 

**Orchard Road, Seaview,  
Isle of Wight, PO34**

**Pittis**   
Helping you move forwards





## Main features

- Detached bungalow situated on a corner plot
- Large lounge / dining area with conservatory onto rear garden
- Walking distance to local shop and transport links
- Short walk to Seaview village and beach
- Ideal property to put your own stamp on

## Accommodation

### GROUND FLOOR

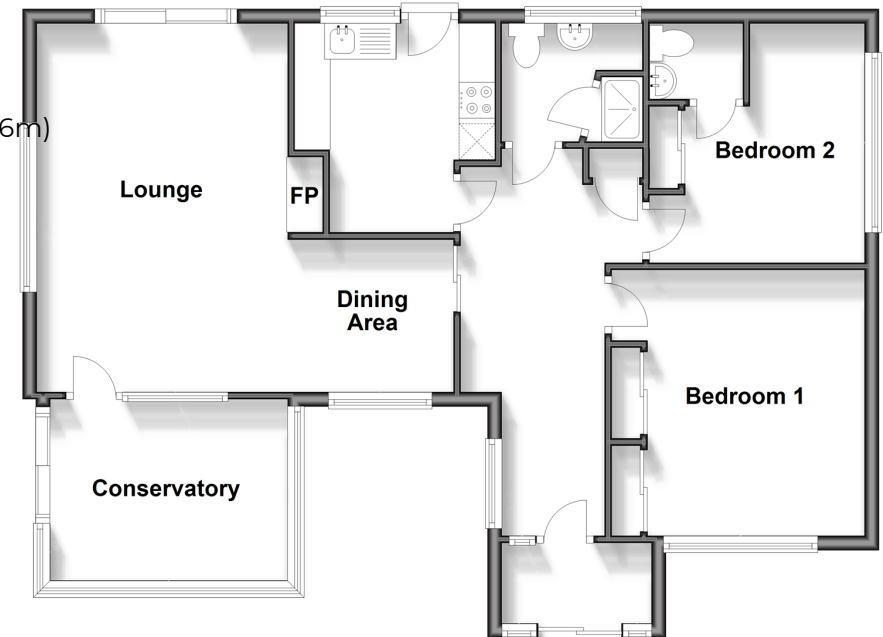
Porch  
Hallway  
Bedroom 1: 12'1 x 11'8 up to fitted wardrobes (3.69m x 3.56m)  
Bedroom 2: 10'10 x 9'11 (3.30m x 3.02m)  
Shower Room  
Kitchen: 9'6 x 9'4 (2.90m x 2.85m)  
Lounge: 19'2 x 16'11 (5.85m x 5.16m)  
Conservatory: 11'10 x 8'10 (3.61m x 2.69m)

### OUTSIDE

Front Garden  
Off Road Parking  
Garage  
Rear Garden

### Ground Floor

Approx. 81.2 sq. metres (873.5 sq. feet)



Call Ryde - 01983 564646 ■ [pittis.co.uk](http://pittis.co.uk)

■ Legal advice should be taken to verify fixtures/fittings, planning, alterations and/or lease details

■ Appliances & services are untested, dimensions are approximate and floor plans are not to scale