



**Price**

**£75,000**

**Leasehold**

1x  1x  1x 

**Homebray House, Mary  
Rose Avenue, Wootton  
Bridge, Ryde, Isle of  
Wight, PO33**



**Video Tour available**

**Pittis**   
Helping you move forwards





## Main features

- Immaculate 1st floor retirement flat, with lift access to all floors
- Offered chain free
- Close to all local amenities as situated in the heart of Wootton village
- Close to all island transport links

## Accommodation

### FIRST FLOOR

**Lounge/Dining Room:** 16'10 x 10'7 (5.13m x 3.23m)

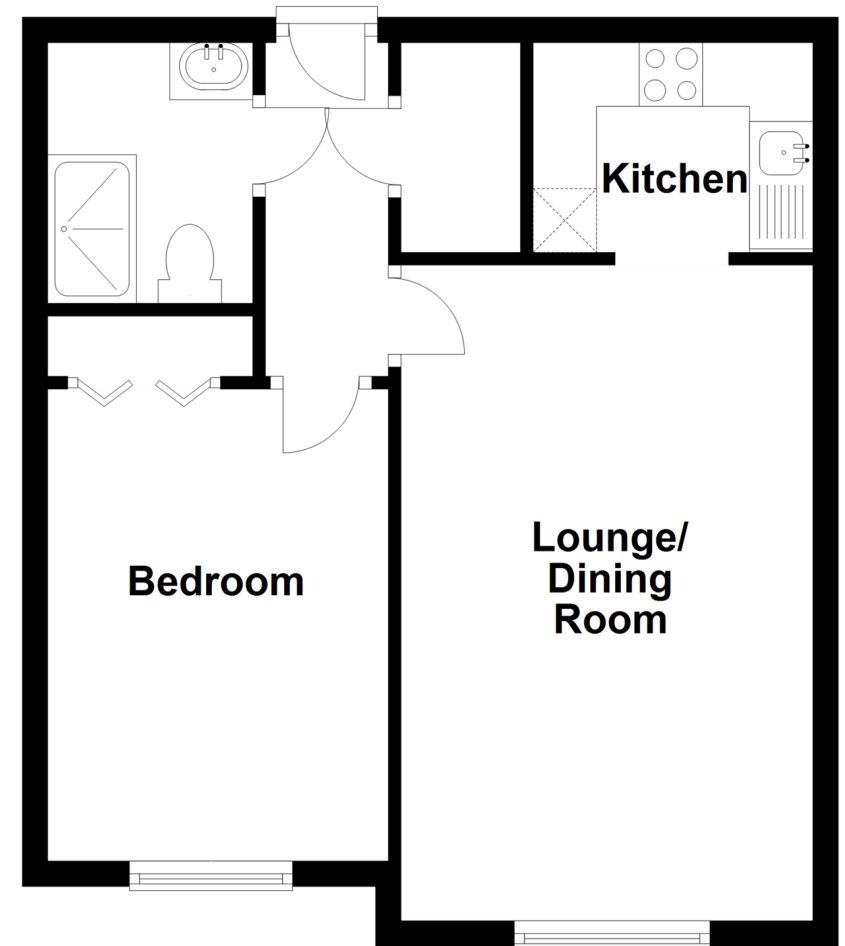
**Bedroom:** 12'0 x 8'7 (3.66m x 2.62m)

**Bathroom:** 6'9 x 5'3 (2.06m x 1.60m)

**Kitchen:** 7'2 x 5'4 (2.19m x 1.63m)

## First Floor

Approx. 40.3 sq. metres (433.6 sq. feet)



**Call Ryde - 01983 564646 ■ [pittis.co.uk](http://pittis.co.uk)**

- Legal advice should be taken to verify fixtures/fittings, planning, alterations and/or lease details
- Appliances & services are untested, dimensions are approximate and floor plans are not to scale



60425714/20220510/KB/SL