



OVER 60?

Secure this property
for up to **59% less!**

Price
£280,000

Freehold

3x  2x  2x 

**Melville Street, Ryde,
Isle of Wight, PO33**

Pittis 
Helping you move forwards



Main features

- **Stunning Grade 2 listed cottage in the centre of Ryde**
- **Character features throughout**
- **Gated driveway and garage with plenty of outside space**
- **The ideal home for commuting, 5 minute walk to beach and mainland transport links**
- **Accommodation over 3 floors**

Accommodation

LOWER GROUND FLOOR

Kitchen: 11'8 x 9'6 (3.56m x 2.90m)

Dining Area: 11'0 x 10'8 (3.36m x 3.25m)

GROUND FLOOR

Lounge: 12'6 x 11'8 (3.81m x 3.56m)

Bathroom

Bedroom 2 : 9'3 x 7'9 (2.82m x 2.36m)

FIRST FLOOR

Landing

Bedroom 3: 8'1 x 7'7 (2.47m x 2.31m)

Bedroom 1

En-suite Bathroom

OUTSIDE

Garage

Driveway Parking

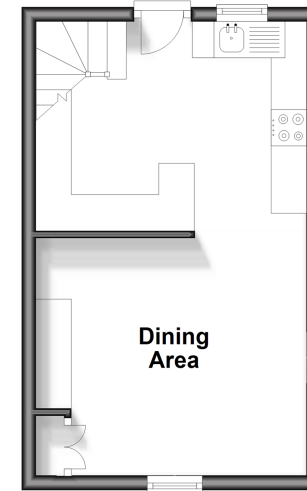
Rear Garden

Call Ryde - 01983 564646 ■ pittis.co.uk

- Legal advice should be taken to verify fixtures/fittings, planning, alterations and/or lease details
- Appliances & services are untested, dimensions are approximate and floor plans are not to scale
- Through a Homewise Home For Life Plan people aged 60+ can secure this property for up to 59% less, by purchasing a Lifetime Lease.

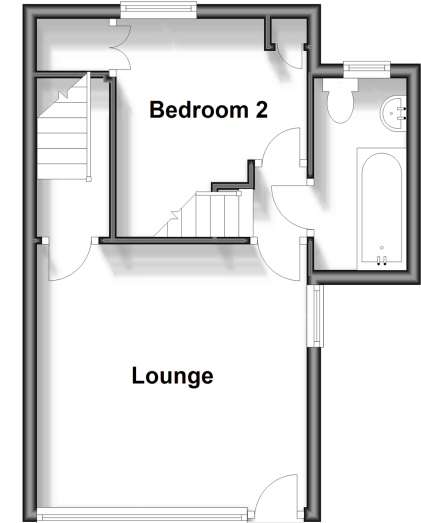
Lower Ground Floor

Approx. 23.9 sq. metres (256.7 sq. feet)



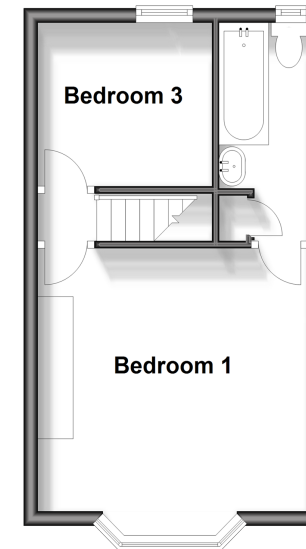
Ground Floor

Approx. 29.3 sq. metres (315.8 sq. feet)



First Floor

Approx. 25.8 sq. metres (278.1 sq. feet)



60425770/20240402/DN/JW