



Price
£399,950

Freehold

3x  2x  1x 

**Rosemary Lane, Ryde,
Isle of Wight, PO33**



Video Tour available

Pittis 
Helping you move forwards



Main features

- Surrounded by forest and down a country lane
- Country Walks from the doorstep
- Ample parking for multiple vehicles
- A short walk back from Ryde town
- The perfect place to raise a family

Accommodation

GROUND FLOOR

Entrance Hall

Lounge: 13'9 x 13'0 (4.19m x 3.97m)

Kitchen/Dining Room: 15'8 x 12'9 (4.78m x 3.89m)

Bedroom 1: 12'5 x 0'0 (3.79m x 0.00m)

En-Suite

Bedroom 2: 13'4 x 11'5 (4.07m x 3.48m)

Bedroom 3: 13'0 x 9'1 (3.97m x 2.77m)

Bathroom

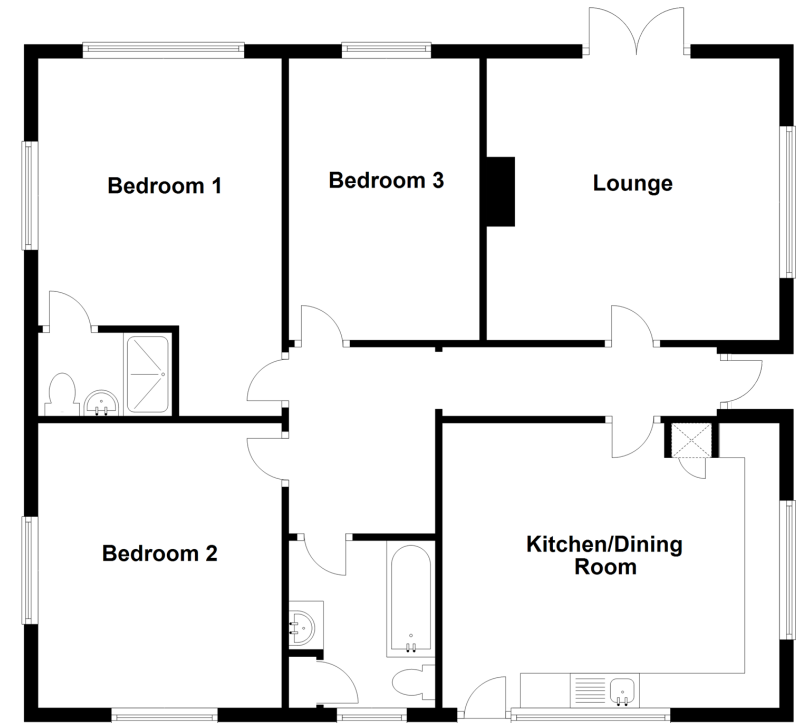
OUTSIDE

Driveway Parking

Front and Rear Gardens

Ground Floor

Approx. 99.0 sq. metres (1065.1 sq. feet)



Call Ryde - 01983 564646 ■ pittis.co.uk

- Legal advice should be taken to verify fixtures/fitings, planning, alterations and/or lease details
- Appliances & services are untested, dimensions are approximate and floor plans are not to scale



60425853/20221117/KB/JW