



**Price**

**£475,000**

**Leasehold**

4x  3x  2x 

**Pitt Street, Ryde, Isle of  
Wight, PO33**

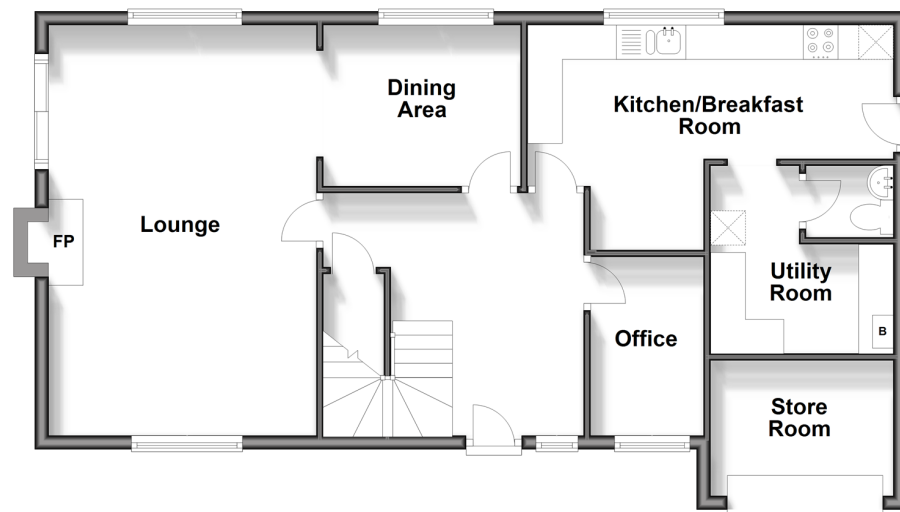
**OVER 60?**

Secure this property  
for up to **59% less!**

**Pittis**   
Helping you move forwards

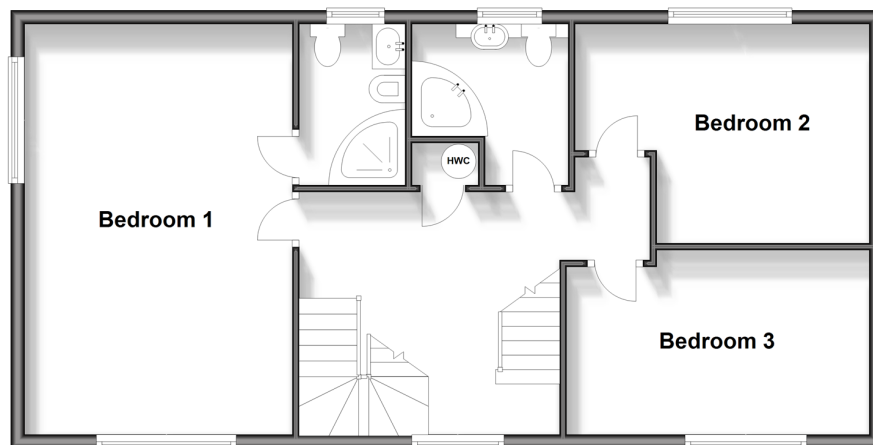
## Ground Floor

Approx. 75.1 sq. metres (808.1 sq. feet)



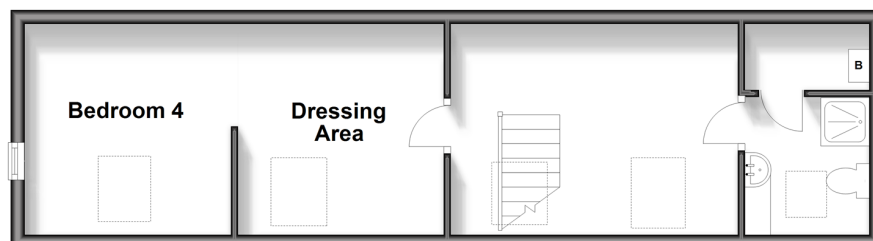
## First Floor

Approx. 72.8 sq. metres (783.3 sq. feet)



## Second Floor

Approx. 37.4 sq. metres (402.1 sq. feet)



## Accommodation

### GROUND FLOOR

Entrance Hallway

Lounge: 19'10 x 12'8 (6.05m x 3.86m)

Dining Area: 9'4 x 7'8 (2.85m x 2.34m)

Office: 8'6 x 5'4 (2.59m x 1.63m)

Kitchen / Breakfast Room: 17'3 x 6'4 (5.26m x 1.93m)  
plus 5'2 x 4'5 (1.58m x 1.35m)

Utility Room: 7'9 x 5'2 (2.36m x 1.58m)

Cloakroom

### FIRST FLOOR

Landing

Bedroom 1: 19'11 x 12'10 (6.07m x 3.91m)

En-Suite Shower Room: 7'10 x 4'0 (2.39m x 1.22m)

Bedroom 2: 13'11 x 10'6 (4.24m x 3.20m)

Bedroom 3: 14'3 x 9'0 (4.35m x 2.75m)

Bathroom: 7'4 x 5'4 (2.24m x 1.63m)

### SECOND FLOOR

Landing

Bedroom 4: 13'6 x 10'0 (4.12m x 3.05m)

Dressing Area: 10'1 x 9'11 (3.08m x 3.02m)

En-Suite Shower Room

### OUTSIDE

Front Garden

Store Room

Driveway Parking

Rear Garden

Summer House





## Main features

- An exceptional and large detached house
- Located on the outskirts of town yet within easy access of amenities
- Off road parking for several cars
- Very well presented throughout
- Beautiful lawned rear gardens
- Ground floor office and utility room



### Nearest Schools

Haylands Primary School  
Dover Park Primary School  
Oakfield C of E Primary School  
Ryde Academy  
Ryde School with Upper Chine



### Transport Information

Local bus routes providing Islandwide connections,  
Wightlink Catamaran service to Portsmouth and  
Hovertravel service to Portsmouth & Southsea



### Address

Pitt Street, Ryde, Isle of Wight, PO33



### Directions

For directions to this property please contact us.





Call Ryde Branch 01983 564646 ■ [pittis.co.uk](https://pittis.co.uk)



■ Legal advice should be taken to verify fixtures/fittings, planning, alterations and/or lease details ■ Appliances & services are untested, dimensions are approximate and floor plans are not to scale  
■ Through a Homewise Home For Life Plan people aged 60+ can secure this property for up to 59% less, by purchasing a Lifetime Lease.



60425967/20240307/DN/AGAN