



OVER 60?

Secure this property
for up to **59% less!**

Price

£125,000

Leasehold

1x  1x  1x 

**George Street, Ryde,
Isle of Wight, PO33**

Pittis 
Helping you move forwards



Main features

- Compact terraced house
- Set down a quiet path off the main road
- Available with no onward chain
- Easy access to the High street, transport & High Speed links to the mainland
- Residents parking permits are available from IOW council

Accommodation

GROUND FLOOR

Entrance Hall

Kitchen: 10'7 x 4'9 (3.23m x 1.45m)

Lounge: 14'5 x 10'6 (4.40m x 3.20m)

FIRST FLOOR

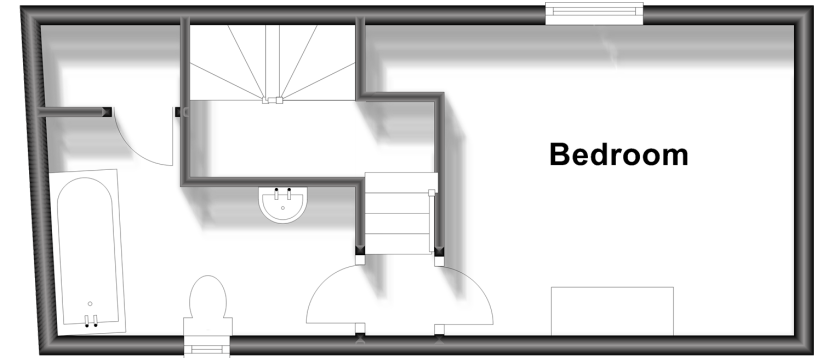
Landing

Bedroom: 14'4 x 10'7 (4.37m x 3.23m)

Bathroom

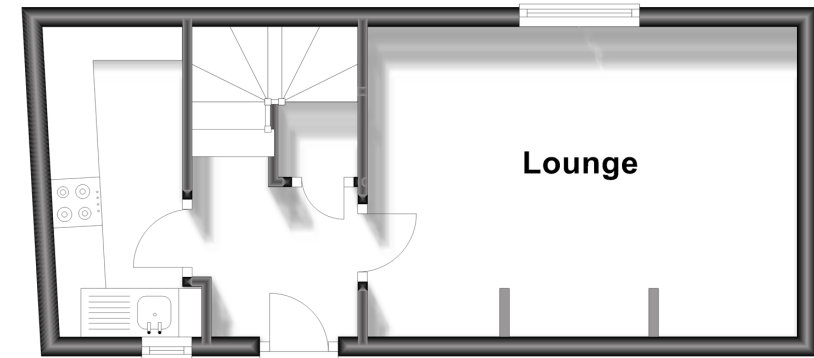
First Floor

Approx. 24.4 sq. metres (262.4 sq. feet)



Ground Floor

Approx. 24.4 sq. metres (262.5 sq. feet)



Call Ryde - 01983 564646 ■ pittis.co.uk

- Legal advice should be taken to verify fixtures/fittings, planning, alterations and/or lease details
- Appliances & services are untested, dimensions are approximate and floor plans are not to scale
- Through a Homewise Home For Life Plan people aged 60+ can secure this property for up to 59% less, by purchasing a Lifetime Lease.



60426059/20240125/DN/AG