



**OVER 60?**

Secure this property  
for up to **59% less!**

**Price**

**£300,000**

**Leasehold**

2x  2x  2x 

**Newlands, St Helens,  
Ryde, Isle of Wight,  
PO33**

**Pittis**   
Helping you move forwards





## Main features

- A charming semi detached period cottage
- Fully renovated and reconfigured to offer a light spacious home
- Easy parking and walking distance to the shops & beaches
- Benefitting from 2 stunning bathrooms and an open plan kitchen/dining area

## Accommodation

### GROUND FLOOR

Hallway

Lounge: 12'6 x 9'11 (3.81m x 3.02m)

Dining Room: 12'6 x 9'11 (3.81m x 3.02m)

Kitchen: 8'3 x 8'3 (2.52m x 2.52m)

Shower Room

### FIRST FLOOR

Landing

Bedroom 1: 12'5 x 9'11 (3.79m x 3.02m)

Bedroom 2: 12'5 x 9'9 (3.79m x 2.97m)

Bathroom

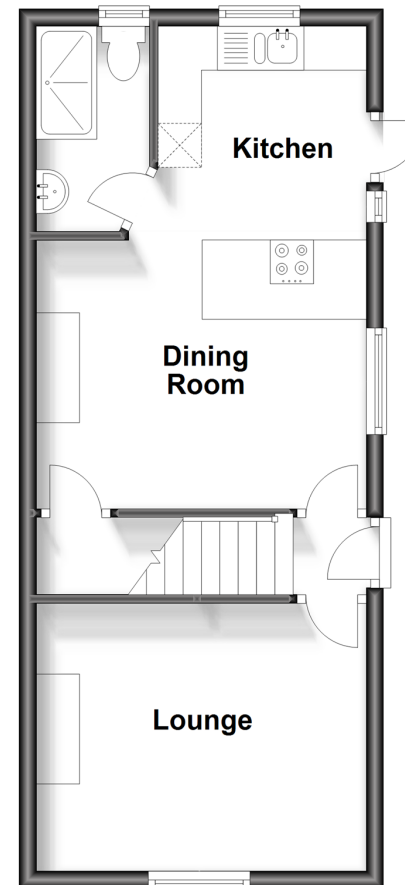
### OUTSIDE

Driveway

Rear Garden

### Ground Floor

Approx. 36.7 sq. metres (394.8 sq. feet)



### First Floor

Approx. 36.7 sq. metres (394.8 sq. feet)



**Call Ryde - 01983 564646 ■ [pittis.co.uk](http://pittis.co.uk)**

- Legal advice should be taken to verify fixtures/fittings, planning, alterations and/or lease details
- Appliances & services are untested, dimensions are approximate and floor plans are not to scale
- Through a Homewise Home For Life Plan people aged 60+ can secure this property for up to 59% less, by purchasing a Lifetime Lease.



60426126/20240311/KB/JW