



Price
£180,000

Leasehold

2x  1x  1x 

**Argyll Street, Ryde, Isle
of Wight, PO33**

OVER 60?

Secure this property
for up to **59% less!**

Pittis 
Helping you move forwards



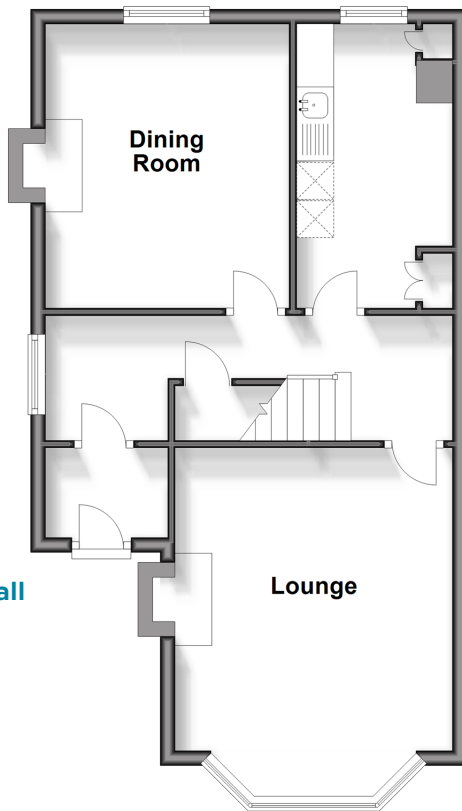
Main features

- An upper ground floor maisonette
- Located on the edge of town with access to all amenities
- Good size accommodation throughout
- In need of updating and modernisation
- Great opportunity to purchase an older style property and add your own personality

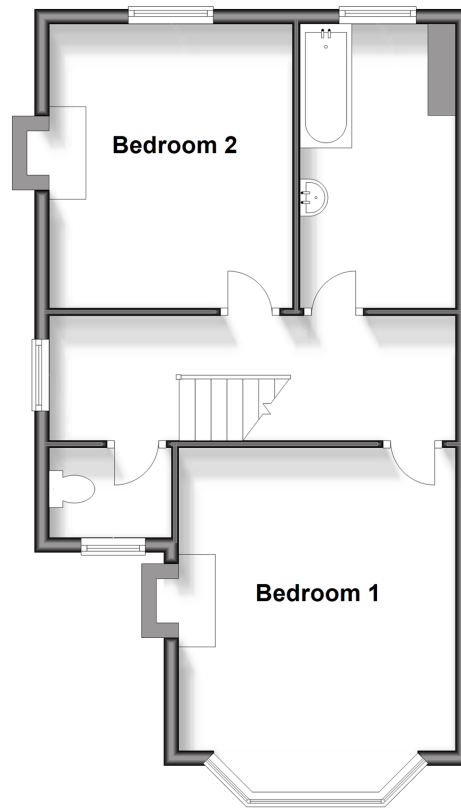
Call Ryde - 01983 564646 ■ pittis.co.uk

- If buying to let, the energy rating will need to be improved to at least 'E' rating before you can let the property
- Appliances & services are untested, dimensions are approximate and floor plans are not to scale

Ground Floor
Approx. 49.7 sq. metres (534.6 sq. feet)



First Floor
Approx. 49.7 sq. metres (534.4 sq. feet)



Accommodation

GROUND FLOOR

Entrance Porch

Hallway

Lounge: 13'8 x 12'4 (4.17m x 3.76m)

Dining Room: 12'10 x 11'1 (3.91m x 3.38m)

Kitchen: 12'8 x 5'8 (3.86m x 1.73m)

FIRST FLOOR

Landing

Bedroom 1: 13'11 x 12'5 (4.24m x 3.79m)

Bedroom 2: 12'11 x 11'1 (3.94m x 3.38m)

Bathroom: 12'7 x 5'8 (3.84m x 1.73m)

Separate Toilet

OUTSIDE

Rear Garden

- Legal advice should be taken to verify fixtures/fittings, planning, alterations and/or lease details
- Through a Homewise Home For Life Plan people aged 60+ can secure this property for up to 59% less, by purchasing a Lifetime Lease.