



**Price**

**£110,000**

**Leasehold**

2x  1x  1x 

**Anglesea Street, Ryde,  
Isle of Wight, PO33**

**Pittis**   
Helping you move forwards





## Main features

- First floor apartment situated in the heart of Ryde town centre
- Ideal buy to let investment
- Walking distance to the beach and transport links
- Perfect home for an easy lifestyle
- Communal garden to enjoy in the summer months

## Accommodation

### FIRST FLOOR

#### Hallway

Lounge: 14'7 x 13'5 (4.45m x 4.09m)

Kitchen: 8'7 x 8'5 (2.62m x 2.57m)

Bathroom: 7'6 x 6'1 (2.29m x 1.86m)

Bedroom 1: 14'10 x 8'6 (4.52m x 2.59m)

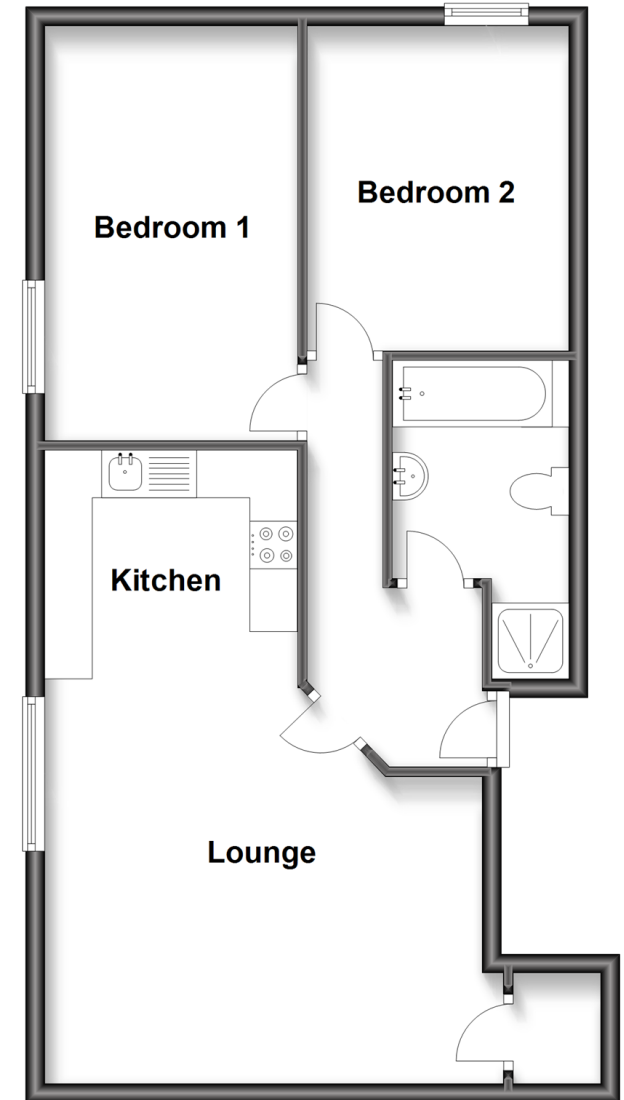
Bedroom 2: 11'3 x 9'6 (3.43m x 2.90m)

### OUTSIDE

Communal Garden

## First Floor

Approx. 58.9 sq. metres (634.1 sq. feet)



**Call Ryde - 01983 564646 ■ [pittis.co.uk](http://pittis.co.uk)**

- Legal advice should be taken to verify fixtures/fittings, planning, alterations and/or lease details
- Appliances & services are untested, dimensions are approximate and floor plans are not to scale



60426277/20240227/JW/JW