



Price
£325,000

Freehold

2x  1x  1x 

**Marina Avenue, Appley,
Ryde, Isle of Wight,
PO33**

Pittis 
Helping you move forwards



Main features

- Detached bungalow situated walking distance to Appley beach and park
- Ideal home to put your own stamp on
- Lovely rear garden to enjoy in the summer months
- Easy access to Ryde town centre and mainland transport links
- Spacious rooms throughout

Accommodation

GROUND FLOOR

Porch

Entrance Hallway

Lounge: 15'10 x 13'0 (4.83m x 3.97m)

Kitchen: 11'3 x 10'9 (3.43m x 3.28m)

Bedroom 1: 12'8 x 10'7 (3.86m x 3.23m)

Bedroom 2: 12'5 x 8'5 up to fitted wardrobes (3.79m x 2.57m)

Bathroom

Separate Toilet

OUTSIDE

Front Garden

Off Road Parking

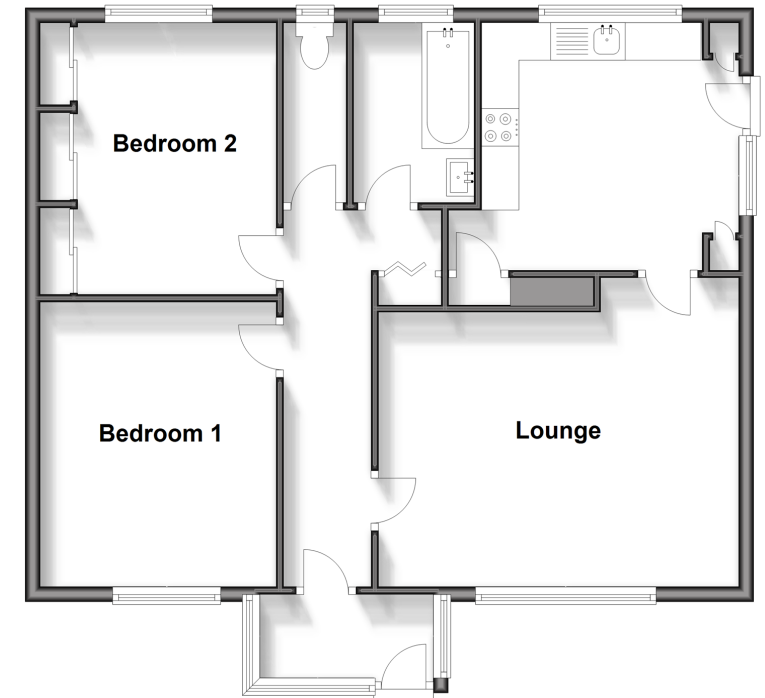
Garage

Rear Garden

Summer House

Ground Floor

Approx. 73.3 sq. metres (788.5 sq. feet)



Call Ryde - 01983 564646 ■ pittis.co.uk

- If buying to let, the energy rating will need to be improved to at least 'E' rating before you can let the property
- Legal advice should be taken to verify fixtures/fittings, planning, alterations and/or lease details
- Appliances & services are untested, dimensions are approximate and floor plans are not to scale



60426296/20240311/DS/JW