



OVER 60?

Secure this property
for up to **59% less!**

Price
£300,000

Freehold

3x  1x  2x 

**West Street, Ryde, Isle
of Wight, PO33**

Pittis 
Helping you move forwards



Main features

- Large detached house with plenty of character
- Spacious kitchen / breakfast room perfect for entertaining family and friends
- Modern interior throughout the home
- Good size rear garden to enjoy in the summer months

Accommodation

GROUND FLOOR

Hallway

Lounge: 14'1" x 12'11" (4.30m x 3.94m)

Dining Area: 12'2" x 11'11" (3.71m x 3.63m)

Kitchen/ Breakfast Room: 20'10" x 11'0" (6.35m x 3.36m)

SPLIT LEVEL FIRST FLOOR

Landing

Bedroom 1: 14'8" x 11'1" (4.47m x 3.38m)

Bedroom 2: 12'1" x 11'10" (3.69m x 3.61m)

Bedroom 3: 10'10" x 7'8" (3.30m x 2.34m)

Bathroom

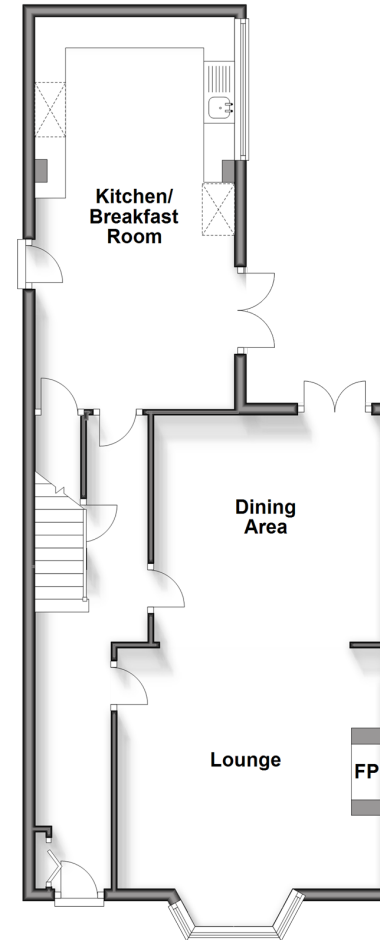
Separate Toilet

OUTSIDE

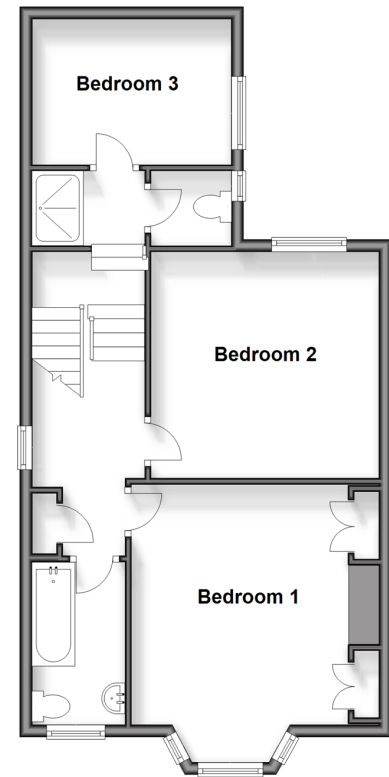
Front Garden

Rear Garden

Ground Floor
Approx. 65.1 sq. metres (700.7 sq. feet)



Split Level First Floor
Approx. 56.4 sq. metres (607.3 sq. feet)



Call Ryde - 01983 564646 ■ pittis.co.uk

- Legal advice should be taken to verify fixtures/fittings, planning, alterations and/or lease details
- Appliances & services are untested, dimensions are approximate and floor plans are not to scale
- Through a Homewise Home For Life Plan people aged 60+ can secure this property for up to 59% less, by purchasing a Lifetime Lease.



60426311/20240307/DN/JW