



Price
£495,000

Freehold

4x  2x  2x 

**Lower Green Road, St.
Helens, Ryde, Isle of
Wight, PO33**

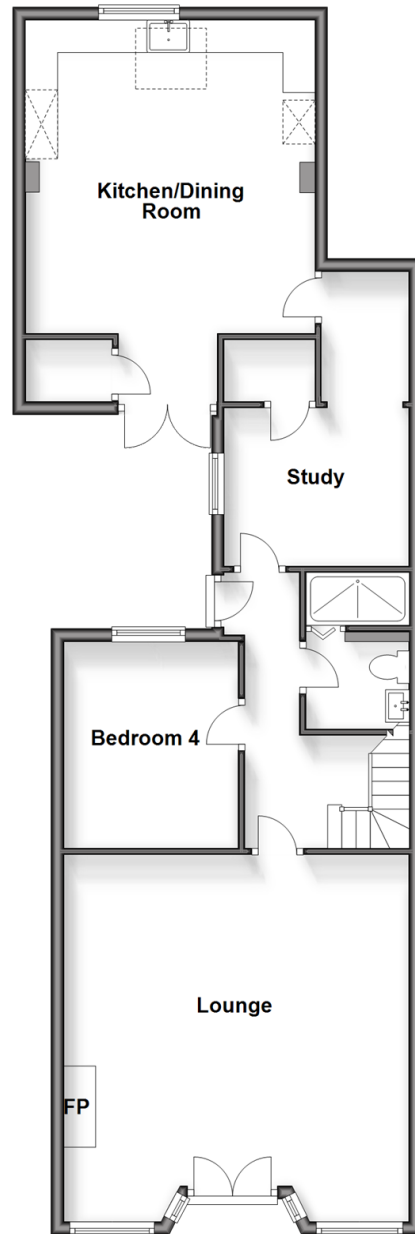
OVER 60?

Secure this property
for up to **59% less!**

Pittis 
Helping you move forwards

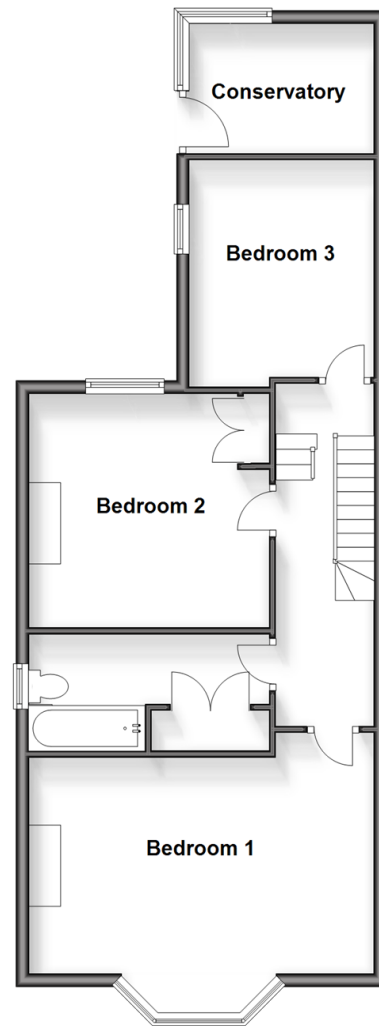
Split Level Ground Floor

Approx. 86.9 sq. metres (934.8 sq. feet)



Split Level First Floor

Approx. 64.8 sq. metres (697.0 sq. feet)



Accommodation

GROUND FLOOR

Lounge: 16'7 x 16'7 (5.06m x 5.06m)

Study: 8'7 x 7'0 (2.62m x 2.14m)

Hallway

Shower Room

Bedroom 4: 10'5 x 8'8 (3.18m x 2.64m)

Kitchen/Dining Room: 15'10 x 14'9 (4.83m x 4.50m)

FIRST FLOOR

Landing

Bedroom 1: 16'4 x 10'10 (4.98m x 3.30m)

Bathroom

Bedroom 2: 11'9 x 10'8 (3.58m x 3.25m)

Bedroom 3: 11'7 x 8'11 (3.53m x 2.72m)

OUTSIDE

Courtyard Garden

Conservatory / Bar: 9'6 x 6'7 (2.90m x 2.01m)



Main features

- A converted Victorian shop on the village green, now a large trendy stylish home
- The perfect holiday or family home within a five minute walk to the beach
- Courtyard with staircase leading to outside dining area and bar
- Fantastic entertaining and social spaces
- Walking distance to Bembridge marina, the Duver and local village amenities



Nearest Schools

St Helen's Primary School
Nettlestone Primary School
Bembridge Primary School
Ryde Academy
Ryde School with Upper Chine



Transport Information

Local bus routes providing Islandwide connections



Address

Lower Green Road, St. Helens, Ryde, Isle of Wight, PO33



Directions

For directions to this property please contact us.

