



OVER 60?

Secure this property
for up to **59% less!**

Price

£220,000

Leasehold

3x  1x  2x 

**Monkton Street, Ryde,
Isle of Wight, PO33**

Pittis 
Helping you move forwards



Main features

- Ideal lock and leave end of terrace house
- Walking distance to the golden sands of Ryde beach
- Open plan living space perfect for entertaining
- Short walk to the town centre
- Ready to put your own stamp on

Accommodation

GROUND FLOOR

Lounge / Dining Area: 23'7 x 11'5 (7.19m x 3.48m)

Kitchen: 11'1 x 6'3 (3.38m x 1.91m)

FIRST FLOOR

Landing

Bedroom 1: 12'5 x 11'5 (3.79m x 3.48m)

Bedroom 2: 10'6 x 7'9 (3.20m x 2.36m)

Bathroom: 8'4 x 6'3 (2.54m x 1.91m)

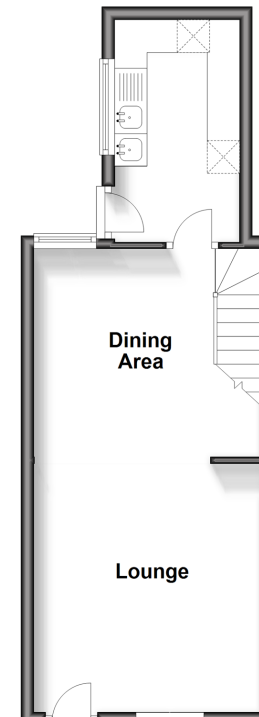
SECOND FLOOR

Bedroom 3: 15'1 x 8'1 (4.60m x 2.47m)

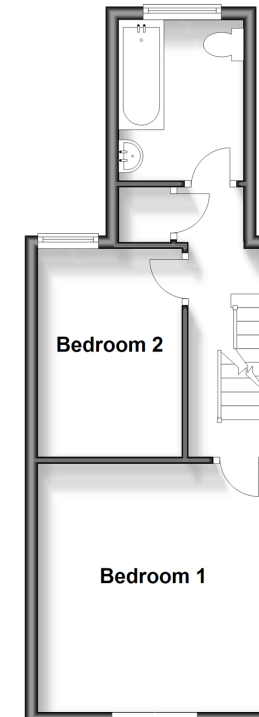
OUTSIDE

Courtyard Garden

Ground Floor
Approx. 31.6 sq. metres (340.3 sq. feet)



First Floor
Approx. 31.6 sq. metres (340.3 sq. feet)



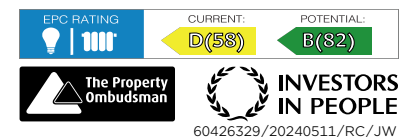
Second Floor
Approx. 14.1 sq. metres (151.3 sq. feet)



Call Ryde - 01983 564646 ■ pittis.co.uk

■ Legal advice should be taken to verify fixtures/fittings, planning, alterations and/or lease details
■ Through a Homewise Home For Life Plan people aged 60+ can secure this property for up to 59% less, by purchasing a Lifetime Lease.

■ Appliances & services are untested, dimensions are approximate and floor plans are not to scale



60426329/20240511/RC/JW