



**Price**  
**£425,000**

**Freehold**

3x  2x  1x 

**Ashey Road, Ryde, Isle  
of Wight, PO33**

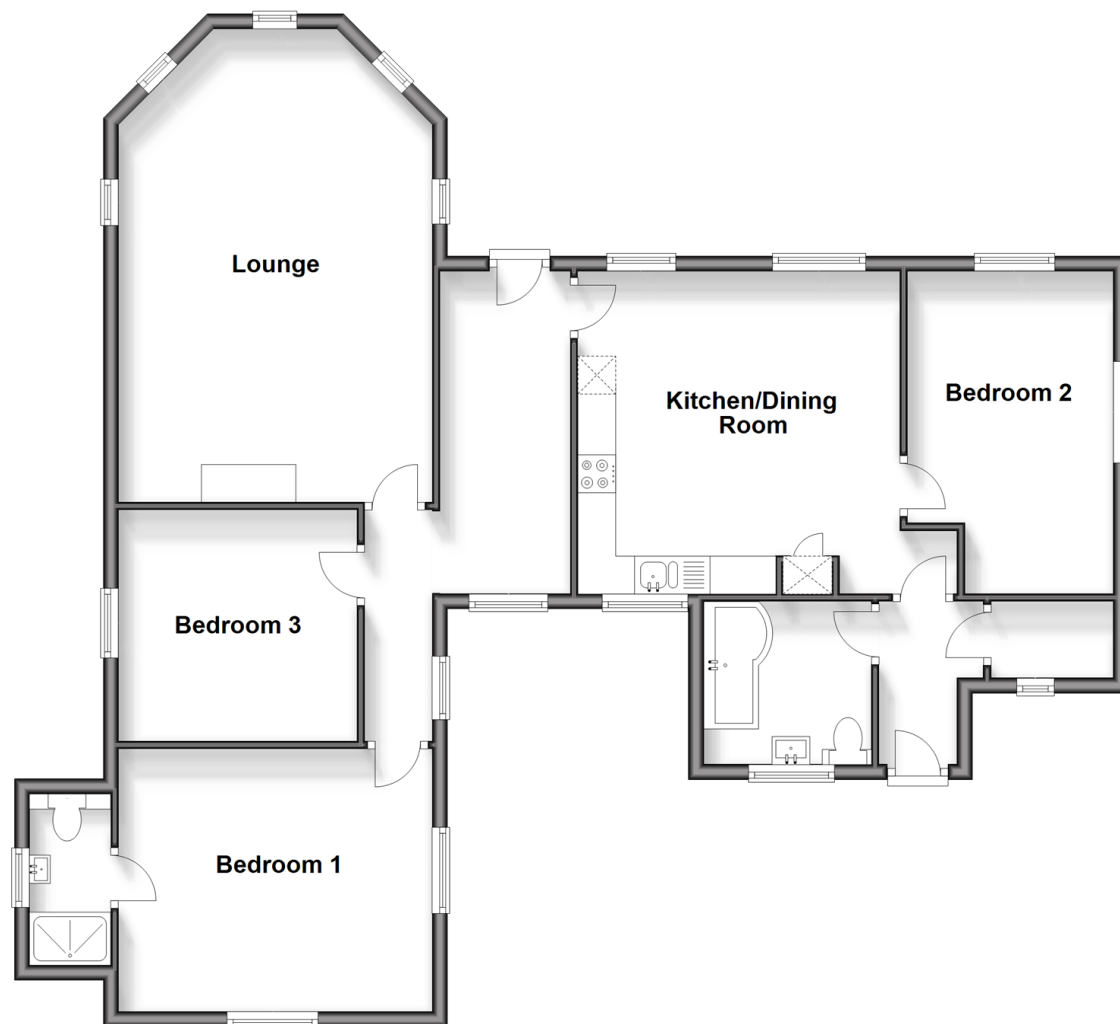
**OVER 60?**

Secure this property  
for up to **59% less!**

**Pittis**   
Helping you move forwards

## Ground Floor

Approx. 103.2 sq. metres (1111.0 sq. feet)



## Accommodation

### GROUND FLOOR

Hallway

Lounge : 20'6 x 13'8 (6.25m x 4.17m)

Kitchen / Dining Room: 15'8 x 14'0 (4.78m x 4.27m)

Bedroom 1 : 13'9 x 11'4 (4.19m x 3.46m)

En-suite Shower Room

Bedroom 2: 13'10 x 9'0 (4.22m x 2.75m)

Bedroom 3 : 10'4 x 9'0 (3.15m x 2.75m)

Bathroom

Rear Hallway

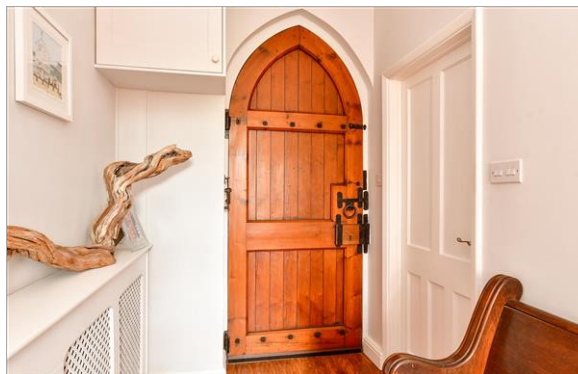
### OUTSIDE

Courtyard

Driveway

Rear Garden





## Main features

- Beautifully presented converted Chapel, dating back to the 19th Century
- Surrounded by countryside with local walks nearby
- An abundance of period features and modern interior
- Ample parking and outside space to enjoy your morning coffee
- A short drive to Ryde town and the beach



### Nearest Schools

Haylands Primary School  
Oakfield C of E Primary School  
Ryde Academy  
Ryde School with Upper Chine



### Transport Information

Local Bus routes providing Island wide connections



### Address

Ashey Road, Ryde, Isle of Wight, PO33



### Directions

For directions to this property please contact us.



