



Price

£180,000

Leasehold

2x  3x  2x 

**George Street,
Sandown, Isle of Wight,
PO36**

OVER 60?

Secure this property
for up to **59% less!**

Pittis 
Helping you move forwards



Main features

- End of terrace house located in the heart of town
- Perfect for a first time buyer or buy to let investor
- Private courtyard garden
- Very convenient location with the town centre and the local beach only moments away

Accommodation

GROUND FLOOR

Entrance Hallway

Lounge: 16'3 x 13'2 (4.96m x 4.02m)

Dining Room: 13'5 x 10'2 (4.09m x 3.10m)

Kitchen: 13'3 x 6'11 (4.04m x 2.11m)

Conservatory: 7'0 x 6'8 (2.14m x 2.03m)

Shower Room

FIRST FLOOR

Landing

Bedroom 1: 16'3 x 13'3 (4.96m x 4.04m)

Bedroom 2: 10'1 x 10'0 (3.08m x 3.05m)

En suite shower room

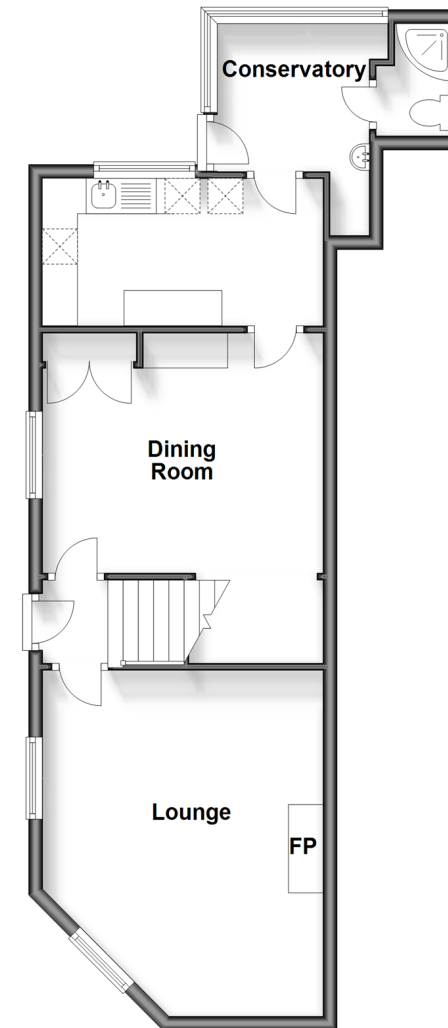
Bathroom

OUTSIDE

Rear Garden

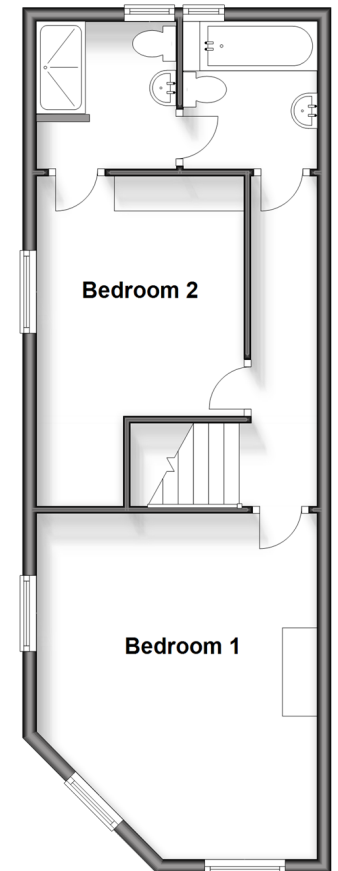
Split Level Ground Floor

Approx. 53.2 sq. metres (573.1 sq. feet)



First Floor

Approx. 46.0 sq. metres (495.6 sq. feet)



Call Sandown - 01983 407444 ■ pittis.co.uk

- Legal advice should be taken to verify fixtures/fittings, planning, alterations and/or lease details
- Appliances & services are untested, dimensions are approximate and floor plans are not to scale
- Through a Homewise Home For Life Plan people aged 60+ can secure this property for up to 59% less, by purchasing a Lifetime Lease.



60517766/20240402/NR/NR