



**OVER 60?**

Secure this property  
for up to **59% less!**

**Price**

**£325,000**

**Freehold**

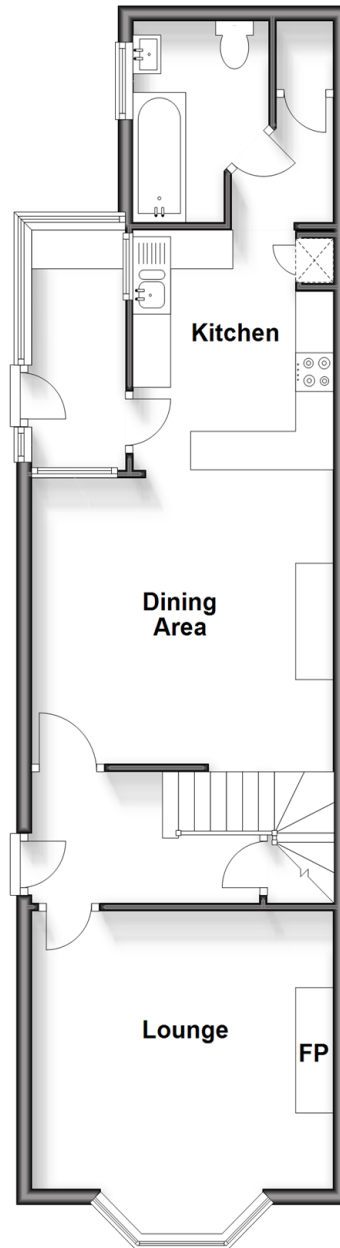
3x  2x  1x 

**New Road, Sandown,  
Isle of Wight, PO36**

**Pittis**   
Helping you move forwards

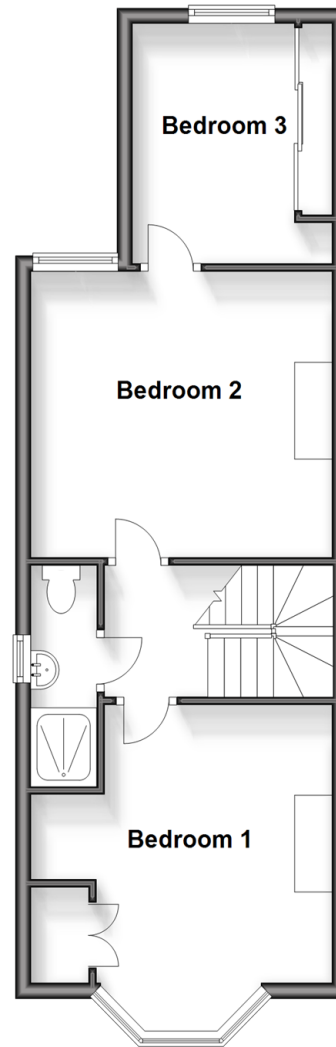
## Ground Floor

Approx. 57.1 sq. metres (614.4 sq. feet)



## First Floor

Approx. 45.6 sq. metres (490.7 sq. feet)



## Accommodation

### GROUND FLOOR

Hallway

Lounge: 14'4 x 13'2 (4.37m x 4.02m)

Kitchen/Dining Area: 22'4 x 13'2 (6.81m x 4.02m)

Utility area

Bathroom

### FIRST FLOOR

Landing

Bedroom 1: 14'4 x 13'2 (4.37m x 4.02m)

Bedroom 2: 13'2 x 12'1 (4.02m x 3.69m)

Bedroom 3: 10'3 x 8'10 (3.13m x 2.69m)

Shower Room

### OUTSIDE

Rear Garden

Driveway





## Main features

- Semi-detached house with lots of character
- Extensively refurbished throughout to an impeccable standard
- Beautifully designed open plan kitchen/diner perfect for entertaining
- Driveway to the front and private enclosed garden to the rear



### Nearest Schools

Primary Schools: Lake Middle School 0.4 miles, Sandham Middle School 0.6 miles, Ventnor Middle School 4.1 miles

Secondary Schools: Sandown High School 0.5 miles, Priory School 2.0 miles, St Catherine's School 4.0 miles



### Transport Information

Local buses providing Islandwide connections, plus local train station with direct links to Ryde Pier Head.



### Address

New Road, Sandown, Isle of Wight, PO36



### Directions

For directions to this property please contact us.



