



Price
£160,000

Leasehold

3x  1x  1x 

**York House, York Road,
Sandown, Isle of Wight,
PO36**

OVER 60?

Secure this property
for up to **59% less!**



Video Tour available

Pittis 
Helping you move forwards



Main features

- First floor spacious apartment in central location
- Short walk to the town centre of Sandown
- Just a stroll to beaches and cliff paths
- Ideal investment property
- Offered with no onward chain

Accommodation

FIRST FLOOR

Hallway

Lounge/Dining Room: 19'11 x 14'10
(6.07m x 4.52m)

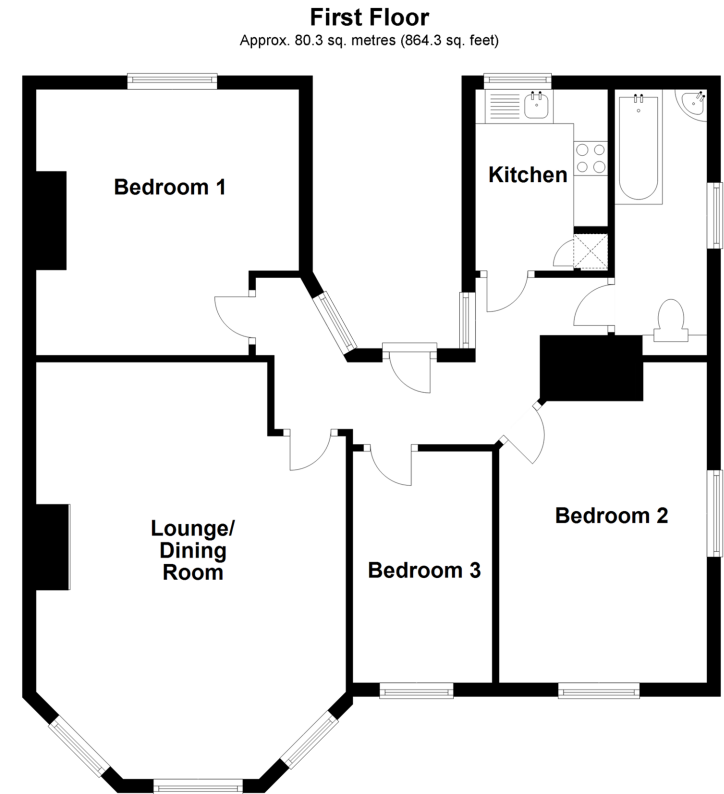
Kitchen: 8'3 x 6'5 (2.52m x 1.96m)

Bedroom 1: 12'8 x 12'8 (3.86m x 3.86m)

Bedroom 2: 13'7 x 9'6 (4.14m x 2.90m)

Bedroom 3: 10'11 x 6'3 (3.33m x 1.91m)

Bathroom



Call Sandown - 01983 407444 ■ pittis.co.uk

- Legal advice should be taken to verify fixtures/fittings, planning, alterations and/or lease details
- Appliances & services are untested, dimensions are approximate and floor plans are not to scale
- Through a Homewise Home For Life Plan people aged 60+ can secure this property for up to 59% less, by purchasing a Lifetime Lease.