



OVER 60?

You could get up to
59% off the price!*

Price

£140,000

Leasehold

1x  1x  1x 

**Carter Street, Sandown,
Isle of Wight, PO36**

Pittis 
Helping you move forwards



Main features

- Ground floor apartment with plenty of space
- Spacious lounge
- Breakfast kitchen flooded with natural light with room for a dining table
- Gardens to the side and rear, perfect for pets

Accommodation

GROUND FLOOR

Hallway

Lounge: 17'7 x 12'4 (5.36m x 3.76m)

Kitchen/Dining Room: 13'1 x 11'0 (3.99m x 3.36m)

Bedroom 1: 13'10 x 10'11 (4.22m x 3.33m)

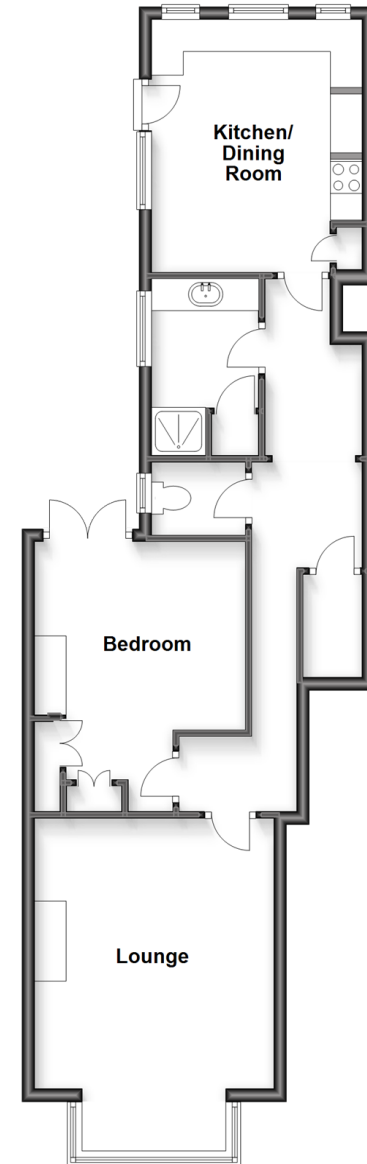
Shower Room
Separate Toilet

OUTSIDE

Rear Garden

Ground Floor

Approx. 63.5 sq. metres (684.0 sq. feet)



Call Sandown - 01983 407444 ■ pittis.co.uk

- Legal advice should be taken to verify fixtures/fittings, planning, alterations and/or lease details
- Appliances & services are untested, dimensions are approximate and floor plans are not to scale
- Our Homewise partnership offer a 'Home for Life' plan to buyers over 60, granting a lifetime lease for your protection and reducing the purchase price by up to 59%



60520380/20220917/DW/LIZ