

OVER 60?

Secure this property
for up to **59% less!**



Video Tour available

Price

£170,000

Leasehold

2x  1x  1x 

Seacroft, Broadway, Sandown, Isle of
Wight, PO36

Pittis 
Helping you move forwards



Main features

- **2 bedroom ground floor apartment**
- **Short walk to the beaches, cliff paths and town centre**
- **Communal gardens and allocated parking**
- **Close to transport links around the island and Ryde Pier Head**
- **Offered with no onward chain**

Accommodation

GROUND FLOOR

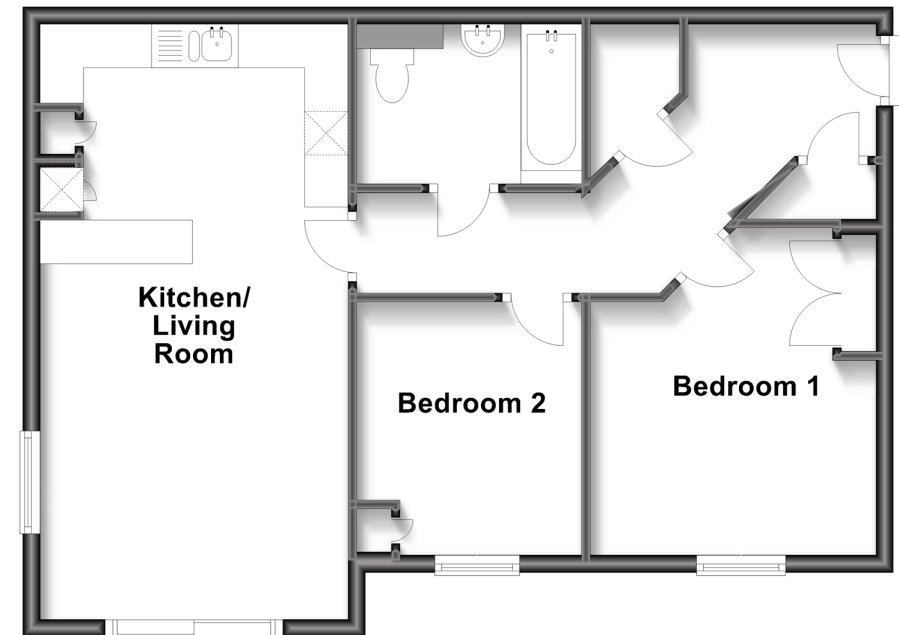
Hallway
 Kitchen/Living Room: 22'6 x 11'7 (6.86m x 3.53m)
 Bedroom 1: 12'4 x 10'8 (3.76m x 3.25m)
 Bedroom 2: 9'6 x 7'8 (2.90m x 2.34m)
 Bathroom

OUTSIDE

Communal Gardens
 Allocated Parking

Ground Floor

Approx. 61.4 sq. metres (660.5 sq. feet)



Call Sandown - 01983 407444 ■ pittis.co.uk

■ Legal advice should be taken to verify fixtures/fittings, planning, alterations and/or lease details
 ■ Through a Homewise Home For Life Plan people aged 60+ can secure this property for up to 59% less, by purchasing a Lifetime Lease.

■ Appliances & services are untested, dimensions are approximate and floor plans are not to scale