



Price
£130,000

Leasehold

1x  1x  1x 

**Broadway, Sandown,
Isle of Wight, PO36**

OVER 60?

Secure this property
for up to **59% less!**



Video Tour available

Pittis 
Helping you move forwards



Main features

- First floor 1 bedroom converted apartment with sea views
- Large balcony-perfect for barbecues
- Open plan living area with modern kitchen
- Off road parking space, on local bus route
- Offered with no onward chain

Accommodation

FIRST FLOOR

Hallway

Lounge/Kitchen Room: 18'3 x 12'1
(5.57m x 3.69m)

Bedroom 1: 12'0 x 11'8 (3.66m x 3.56m)

Shower Room

OUTSIDE

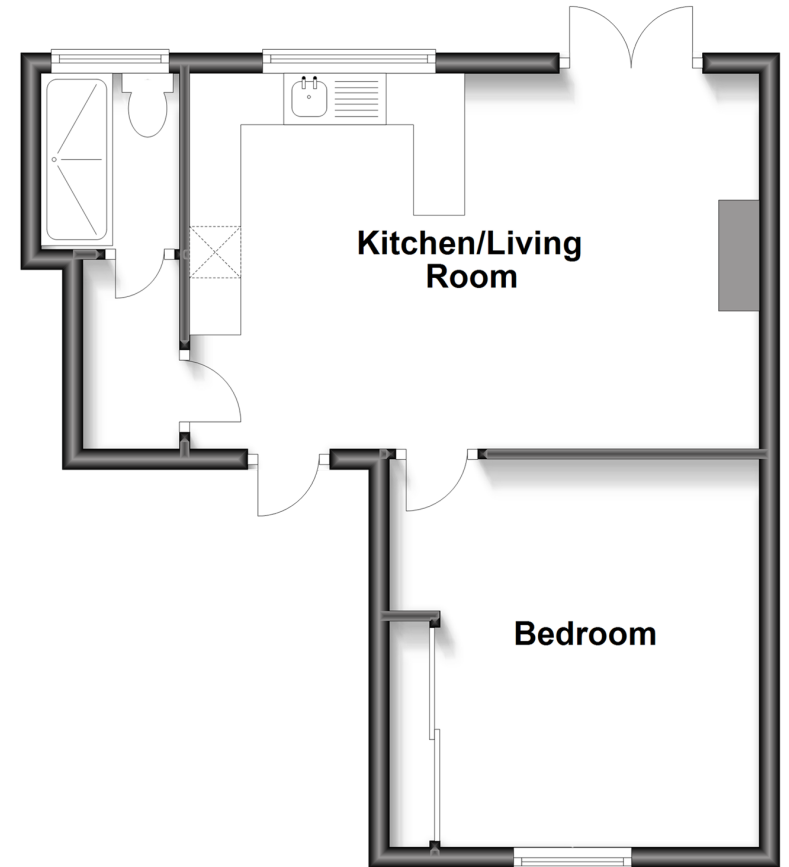
Off Road Parking

OUTSIDE

Rear Communal Courtyard Area

First Floor

Approx. 38.9 sq. metres (418.3 sq. feet)



Call Sandown - 01983 407444 ■ pittis.co.uk

- Legal advice should be taken to verify fixtures/fittings, planning, alterations and/or lease details
- Appliances & services are untested, dimensions are approximate and floor plans are not to scale
- Through a Homewise Home For Life Plan people aged 60+ can secure this property for up to 59% less, by purchasing a Lifetime Lease.



60520678/20221128/LIZ/LIZ