



OVER 60?

Secure this property
for up to **59% less!**

Price
£245,000

Freehold

3x  1x  2x 

Lake Green Road, Lake,
Isle of Wight, PO36

Pittis 
Helping you move forwards



Main features

- Perfect home for a family
- Good sized rooms with potential for a kitchen/diner
- Requiring updating throughout but ideal for those looking for something to put their own stamp on
- Private lawned garden to the rear
- Offered to the market with no onward chain

Accommodation

Entrance Hall

Lounge: 10'9 x 9'9 up to bay (3.28m x 2.97m)

Dining Room : 11'0 x 10'9 up to recess (3.36m x 3.28m)

Kitchen: 11'2 maximum x 8'4 (3.41m x 2.54m)

FIRST FLOOR

Bedroom 1: 10'9 x 9'8 up to bay (3.28m x 2.95m)

Bedroom 2: 11'0 x 9'0 up to bay (3.36m x 2.75m)

Bedroom 3: 10'4 x 8'1 (3.15m x 2.47m)

Shower Room

W/C

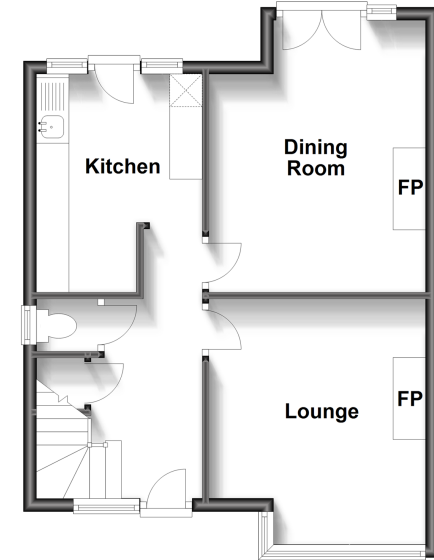
OUTSIDE

Front Garden

Rear Garden

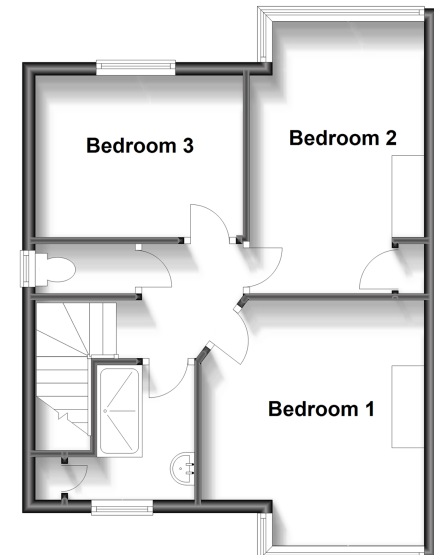
Ground Floor

Approx. 42.4 sq. metres (456.3 sq. feet)



First Floor

Approx. 42.4 sq. metres (456.3 sq. feet)



Call Sandown - 01983 407444 ■ pittis.co.uk

- Legal advice should be taken to verify fixtures/fittings, planning, alterations and/or lease details
- Appliances & services are untested, dimensions are approximate and floor plans are not to scale
- Through a Homewise Home For Life Plan people aged 60+ can secure this property for up to 59% less, by purchasing a Lifetime Lease.



60520685/20231214/VM/NR