

OVER 60?

Secure this property
for up to **59% less!**



Price

£130,000

Freehold

2x  1x  1x 

St. John's Court, St. John's Road, Sandown,
Isle of Wight, PO36

Pittis 
Helping you move forwards



Main features

- Split level 2 bedroom maisonette
- Short stroll to the town centre of Sandown
- Very close to the beaches and cliff paths
- Ideal first time purchase or investment property
- Close to all the amenities that Sandown has on offer

Accommodation

GROUND FLOOR

Kitchen/Living Room: 23'10 x 10'2
(7.27m x 3.10m)

FIRST FLOOR

Landing

Bedroom 1: 13'6 x 7'8 (4.12m x 2.34m)

Bedroom 2: 8'7 x 7'8 (2.62m x 2.34m)

Bathroom

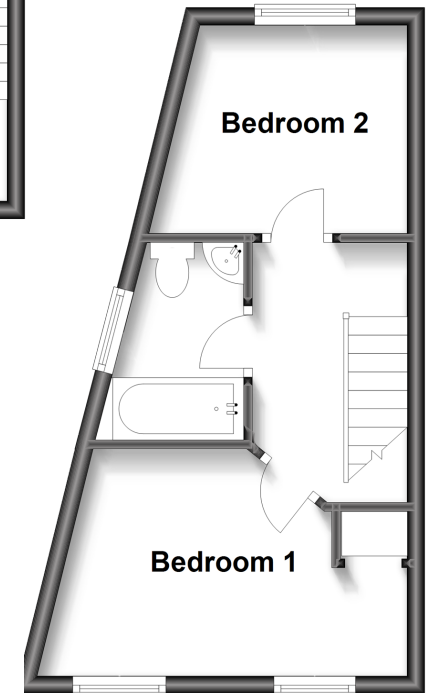
Ground Floor

Approx. 24.0 sq. metres (258.8 sq. feet)



First Floor

Approx. 24.0 sq. metres (258.8 sq. feet)



Call Sandown - 01983 407444 ■ pittis.co.uk

- Legal advice should be taken to verify fixtures/fittings, planning, alterations and/or lease details
- Appliances & services are untested, dimensions are approximate and floor plans are not to scale
- Through a Homewise Home For Life Plan people aged 60+ can secure this property for up to 59% less, by purchasing a Lifetime Lease.



60520710/20221123/DW/LIZ