



OVER 60?

Secure this property
for up to **59% less!**

Price
£300,000

Freehold

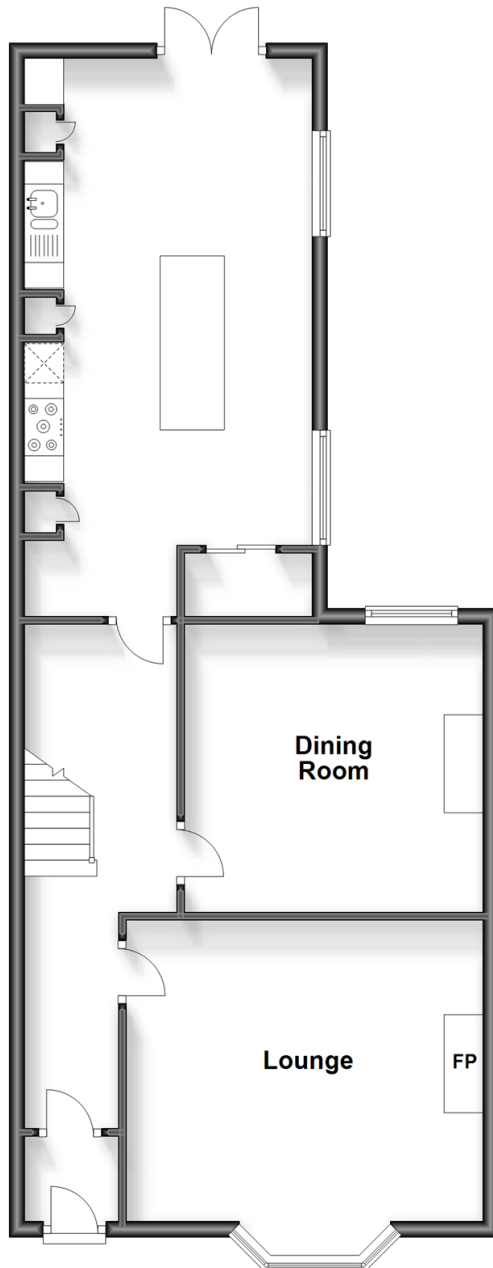
4x  1x  2x 

**Station Avenue,
Sandown, Isle of Wight,
PO36**

Pittis 
Helping you move forwards

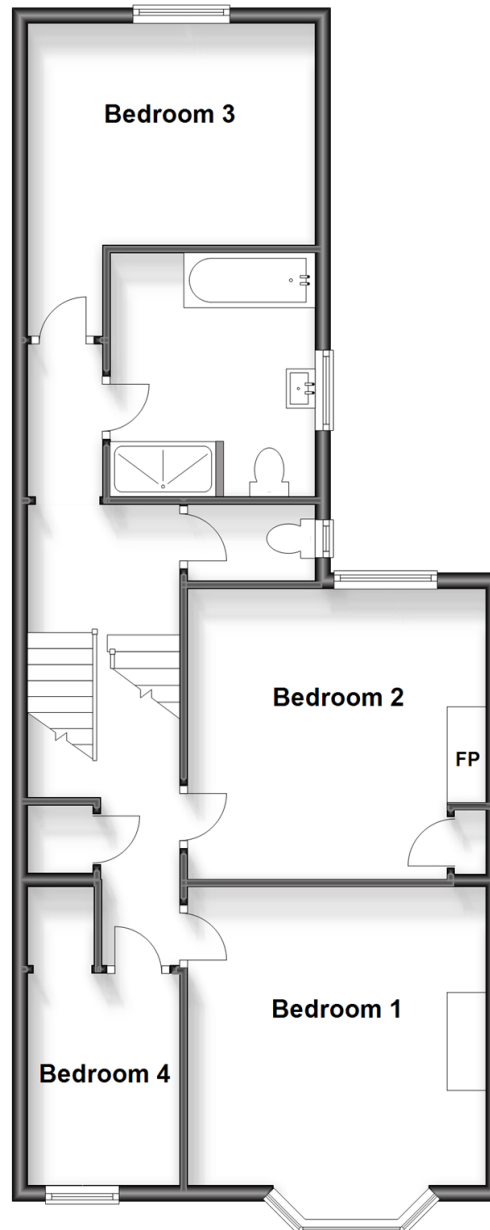
Split Level Ground Floor

Approx. 71.5 sq. metres (769.4 sq. feet)



Split Level First Floor

Approx. 71.5 sq. metres (769.6 sq. feet)



Accommodation

SPLIT LEVEL GROUND FLOOR

Entrance Hall

Lounge: 15'3 x 14'11 (4.65m x 4.55m)

Dining Room: 12'5 x 11'10 (3.79m x 3.61m)

Kitchen/Diner: 21'5 x 12'1 (6.53m x 3.69m)

SPLIT LEVEL FIRST FLOOR

Landing

Bedroom 1: 15'4 x 12'4 (4.68m x 3.76m)

Bedroom 2: 12'4 x 11'9 (3.76m x 3.58m)

Bedroom 3: 12'0 x 9'11 (3.66m x 3.02m)

Bathroom

Separate Toilet

Bedroom 4: 9'0 x 6'7 (2.75m x 2.01m)

OUTSIDE

Front Garden

Rear Garden & Outside Shower

Off Road Parking



Main features

- Well presented house throughout, with many character features
- Perfect home for a family
- Enclosed private garden to the rear with a driveway for 2 cars
- Good sized rooms throughout with a large open plan kitchen/diner and a separate sitting room downstairs offering options for different uses



Nearest Schools

Primary Schools: Sandham Middle School 0.2 miles, Lake Middle School 1.0 miles, Forelands Middle School 3.9 miles

Secondary Schools: Sandown High School 0.3 miles,



Transport Information

Train Stations: Sandown 0.1 miles, Lake 0.8 miles, Brading 1.7 miles



Address

Station Avenue, Sandown, Isle of Wight, PO36



Directions

For directions to this property please contact us.

