



Price
£359,950

Freehold

2x  1x  1x 

**Culver Way, Yaverland,
Isle of Wight, PO36**

OVER 60?

Secure this property
for up to **59% less!**

Pittis 
Helping you move forwards



Main features

- Detached bungalow in a popular location
- Lounge opens in to large conservatory
- Bright & airy throughout
- Garage and driveway & additional parking to the front
- Surrounded by countryside with a 5 minute walk to Yaverland Beach

Accommodation

GROUND FLOOR

Entrance Hallway

Lounge: 24'3 x 9'9 (7.40m x 2.97m)

Kitchen: 8'4 x 8'1 (2.54m x 2.47m)

Bathroom

Bedroom 1: 13'8 x 10'3 (4.17m x 3.13m)

Bedroom 2: 13'0 x 10'1 (3.97m x 3.08m)

Conservatory: 22'8 x 13'3 (6.91m x 4.04m)

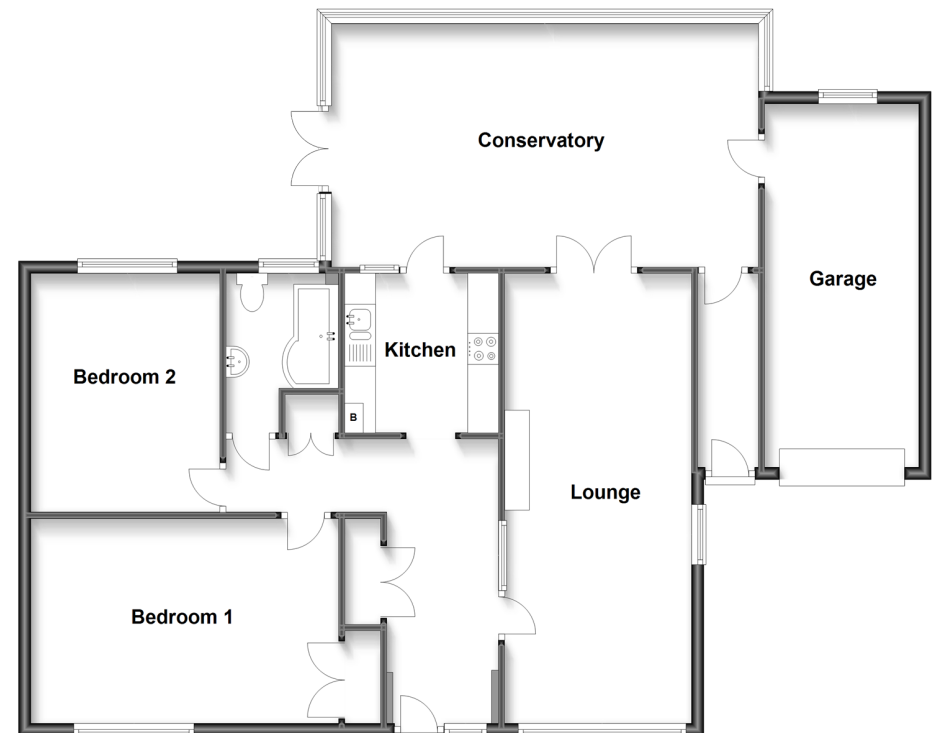
Garage: 17'6 x 8'2 (5.34m x 2.49m)

OUTSIDE

Rear Garden

Off Road Parking

Ground Floor
Approx. 124.2 sq. metres (1337.1 sq. feet)



Call Sandown - 01983 407444 ■ pittis.co.uk

■ Legal advice should be taken to verify fixtures/fittings, planning, alterations and/or lease details
■ Through a Homewise Home For Life Plan people aged 60+ can secure this property for up to 59% less, by purchasing a Lifetime Lease.

■ Appliances & services are untested, dimensions are approximate and floor plans are not to scale