



**Price**  
**£125,000**

**Freehold**

1x  1x  1x 

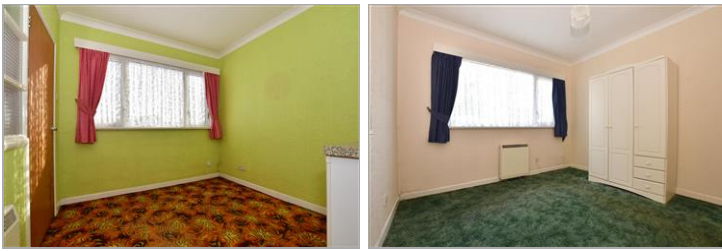
**Fairmead Close, Lake,  
Isle of Wight, PO36**

**OVER 60?**

Secure this property  
for up to **59% less!**

  
Helping you move forwards





## Main features

- Ground floor maisonette
- Requires modernisation throughout
- Great sized rooms with dining area coming off the kitchen
- Large garage and 2 workshop rooms below on the lower ground floor
- Offered with no onward chain as a cash buy only due to the freehold tenure of the property

## Accommodation

### GROUND FLOOR

#### Hallway

Lounge: 14'5 x 11'10 (4.40m x 3.61m)

Kitchen/Dining Room: 16'9 x 9'6 (5.11m x 2.90m)

Bedroom: 10'10 x 10'6 (3.30m x 3.20m)

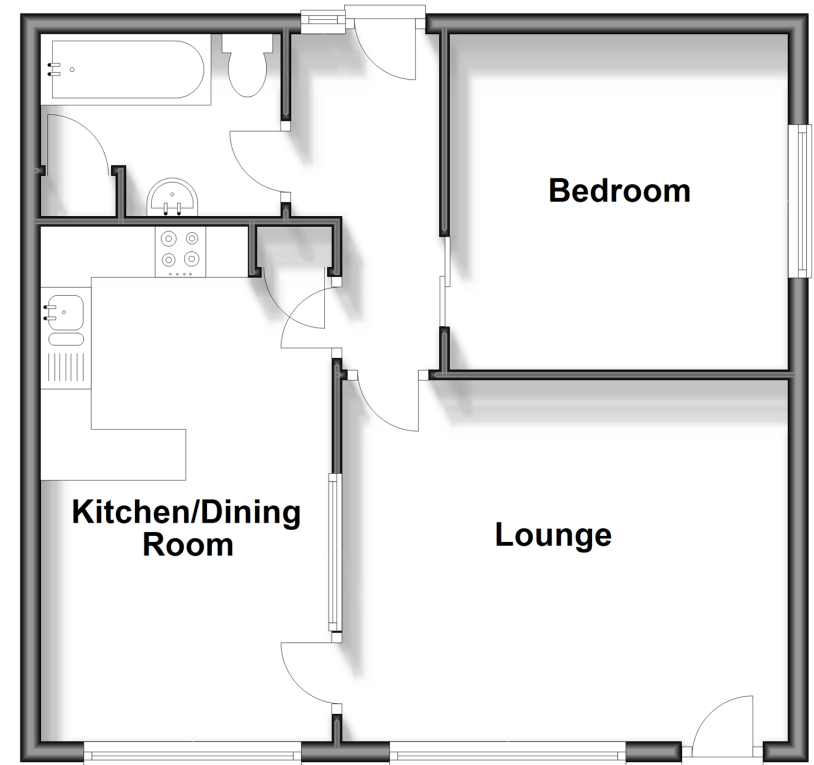
#### Bathroom

### OUTSIDE

#### Garage & Workshop

## Ground Floor

Approx. 51.2 sq. metres (551.4 sq. feet)



**Call Sandown - 01983 407444 ■ [pittis.co.uk](http://pittis.co.uk)**

- Legal advice should be taken to verify fixtures/fittings, planning, alterations and/or lease details
- Appliances & services are untested, dimensions are approximate and floor plans are not to scale
- Through a Homewise Home For Life Plan people aged 60+ can secure this property for up to 59% less, by purchasing a Lifetime Lease.



60520746/20240312/DW/NR