



Price
£225,000

Freehold

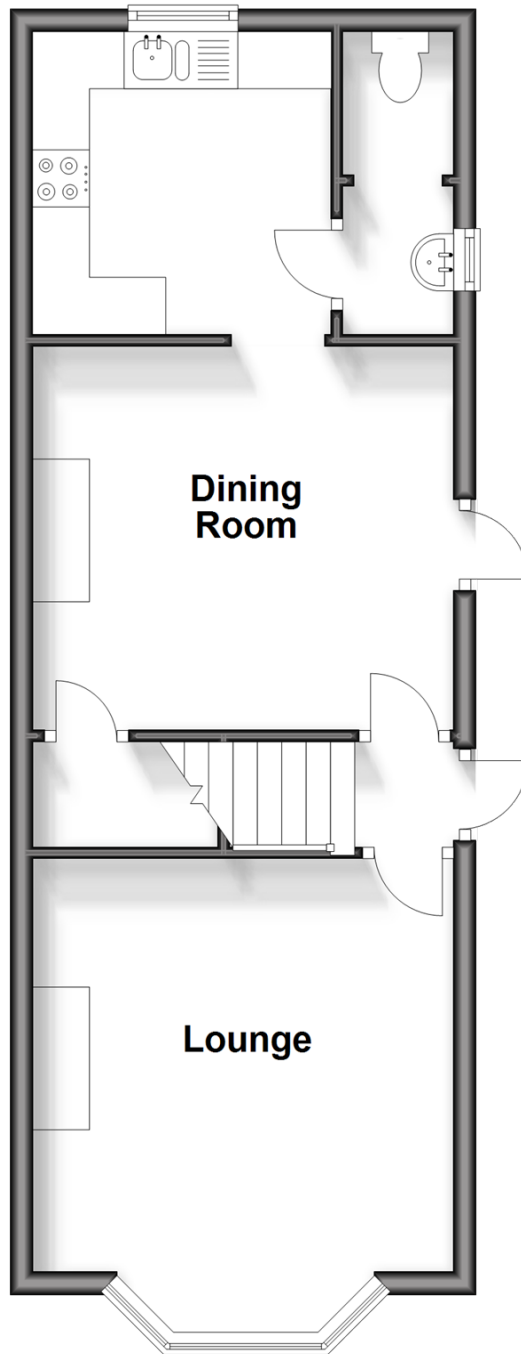
2x  1x  2x 

**Newport Road, Lake,
Isle of Wight, PO36**

Pittis 
Helping you move forwards

Ground Floor

Approx. 40.6 sq. metres (436.6 sq. feet)



First Floor

Approx. 37.6 sq. metres (404.8 sq. feet)



Accommodation

GROUND FLOOR

Entrance Hallway

Lounge: 14'1 x 12'2 (4.30m x 3.71m)

Dining Room: 12'2 x 11'2 (3.71m x 3.41m)

Kitchen: 8'9 x 8'8 (2.67m x 2.64m)

Utility Area

Separate Toilet

FIRST FLOOR

Landing

Bedroom 1: 12'1 x 11'10 (3.69m x 3.61m)

Bedroom 2: 12'1 x 11'3 (3.69m x 3.43m)

Bathroom

OUTSIDE

Rear garden

Driveway



Main features

- Chain free semi-detached house
- Driveway parking for 2 vehicles
- Private enclosed garden to the rear with side access
- Perfect home for a first time buy or buy to let investment
- Located close to local shops and supermarkets with Sandown & Shanklin beaches only a short drive away



Nearest Schools

Lake Middle School 0.3 miles, Sandham Middle School 0.8 miles, Ventnor Middle School 3.9 miles, Sandown High School 0.7 miles, Priory School 1.8 miles, St Catherine's School 3.9 miles, Ryde High School 5.2 miles



Transport Information

Train Stations: Lake 0.1 miles, Sandown 0.6 miles, Shanklin 1.0 miles



Address

Newport Road, Lake, Isle of Wight, PO36



Directions

For directions to this property please contact us.

