



Price
£320,000

Freehold

4x  1x  1x 

**Woods Drive, Sandown,
Isle of Wight, PO36**

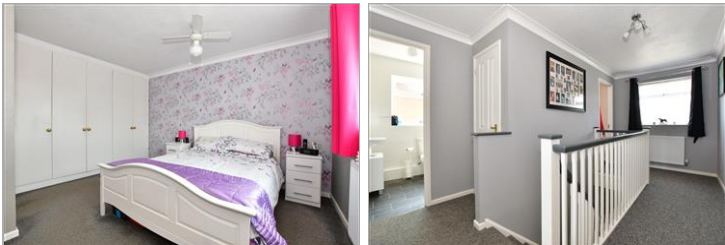
OVER 60?

Secure this property
for up to **59% less!**



Virtual Reality Tour available

Pittis 
Helping you move forwards



Main features

- Beautifully presented house, ideal family home
- Integral garage and plenty of driveway parking
- Enclosed private rear garden with decked area
- Spacious rooms including a separate study and large lounge/diner

Accommodation

GROUND FLOOR

Entrance Hall

Kitchen: 12'2 x 9'8 (3.71m x 2.95m)

Lounge/Diner: 25'0 x 11'7 (7.63m x 3.53m)

Study: 9'6 x 8'5 (2.90m x 2.57m)

Toilet

FIRST FLOOR

Bedroom 1: 13'9 x 9'2 (4.19m x 2.80m)

Bedroom 2: 12'5 x 8'4 (3.79m x 2.54m)

Bathroom

Bedroom 3: 10'6 x 9'2 (3.20m x 2.80m)

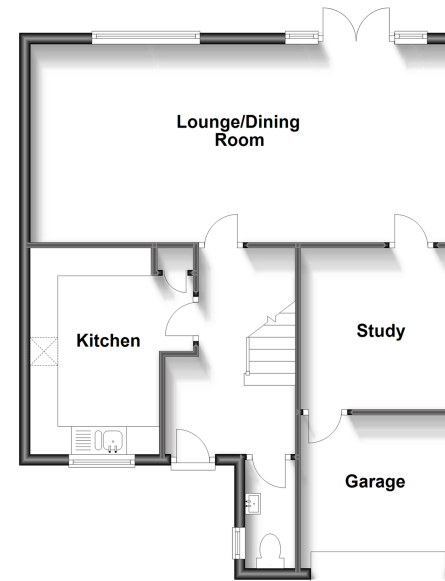
Bedroom 4: 8'8 x 8'5 (2.64m x 2.57m)

OUTSIDE

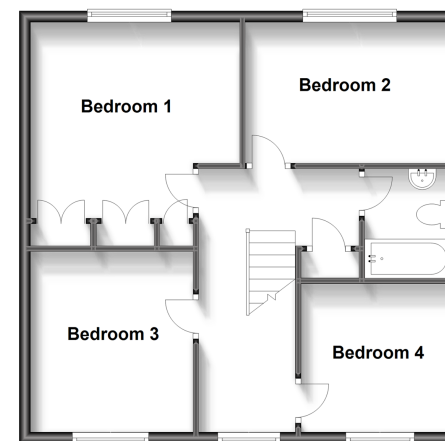
Garage

Driveway

Ground Floor
Approx. 63.6 sq. metres (685.0 sq. feet)



First Floor
Approx. 56.0 sq. metres (603.1 sq. feet)



Call Sandown - 01983 407444 ■ pittis.co.uk

- Legal advice should be taken to verify fixtures/fittings, planning, alterations and/or lease details
- Appliances & services are untested, dimensions are approximate and floor plans are not to scale
- Through a Homewise Home For Life Plan people aged 60+ can secure this property for up to 59% less, by purchasing a Lifetime Lease.



60520850/20230704/NR/NR