

Price
£330,000

Freehold

5x  2x  2x 

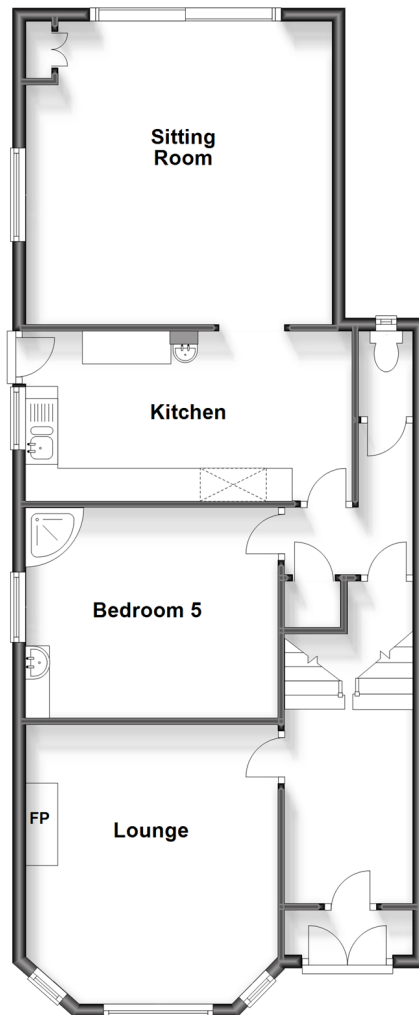
**St. John's Road,
Sandown, Isle of Wight,
PO36**

OVER 60?

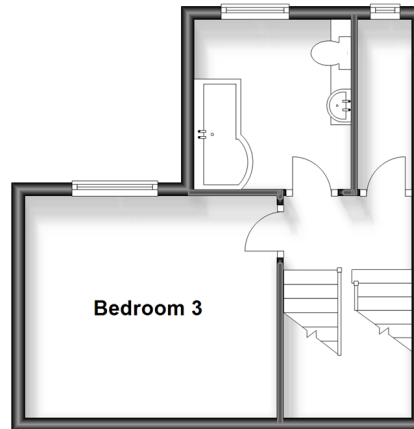
Secure this property
for up to **59% less!**

Pittis 
Helping you move forwards

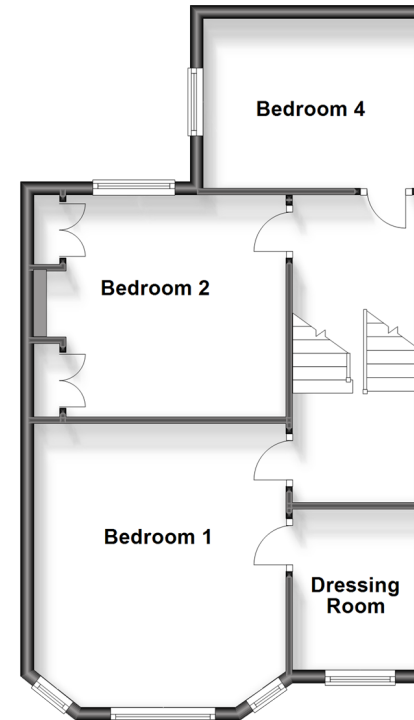
Split Level Ground Floor
Approx. 81.6 sq. metres (878.1 sq. feet)



First Floor
Approx. 29.3 sq. metres (314.9 sq. feet)



Split Level Second Floor
Approx. 54.1 sq. metres (581.9 sq. feet)



Accommodation

GROUND FLOOR

Entrance Hall

Lounge: 14'9 x 12'10 (4.50m x 3.91m)

Bedroom 5: 12'6 x 10'10 (3.81m x 3.30m)

Kitchen: 17'1 x 8'2 (5.21m x 2.49m)

Sitting Room: 15'5 x 15'1 (4.70m x 4.60m)

W/C

FIRST FLOOR

Bedroom 3: 11'6 x 10'10 (3.51m x 3.30m)

Bathroom

SECOND FLOOR

Bedroom 1: 14'5 x 11'10 (4.40m x 3.61m)

Dressing Room: 6'11 x 6'3 (2.11m x 1.91m)

Bedroom 2: 12'10 x 10'10 (3.91m x 3.30m)

Bedroom 4: 11'2 x 8'6 (3.41m x 2.59m)

OUTSIDE

Rear Garden

Driveway to Rear



Main features

- Substantial family home with lots of character
- Driveway parking to the rear and enclosed garden
- Accommodation suitable for 2 families
- Arranged over 3 floors
- Potential for holiday let investment



Nearest Schools

Primary Schools: Sandham Middle School 1.5 miles, Lake Middle School 1.6 miles, Forelands Middle School 4.7 miles

Secondary Schools: Sandown High School 1.5 miles,



Transport Information

Train Stations: Sandown 1.3 miles, Lake 1.3 miles, Brading 2.1 miles



Address

St. John's Road, Sandown, Isle of Wight, PO36



Directions

For directions to this property please contact us.

