



OVER 60?

Secure this property
for up to **59% less!**

Price

£335,000

Freehold

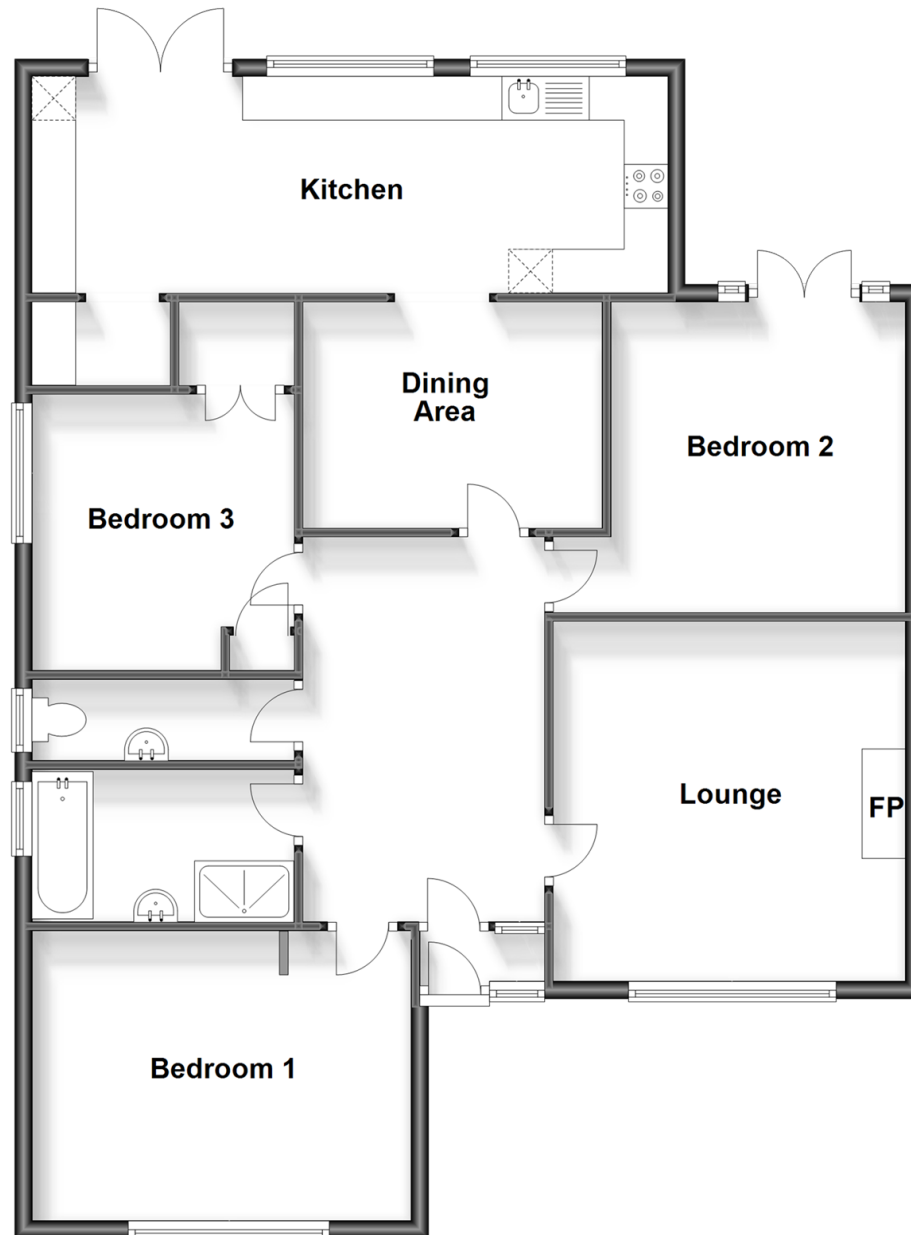
3x  1x  2x 

Avenue Road, Sandown,
Isle of Wight, PO36

Pittis 
Helping you move forwards

Ground Floor

Approx. 108.2 sq. metres (1164.3 sq. feet)



Accommodation

GROUND FLOOR

Entrance Hall : 14'5 x 9'1 (4.40m x 2.77m)

Bedroom 1: 13'5 x 10'8 (4.09m x 3.25m)

Bathroom

Cloakroom

Bedroom 3: 10'3 x 9'9 (3.13m x 2.97m)

Dining Area: 11'3 x 8'3 (3.43m x 2.52m)

Kitchen: 24'0 x 8'11 (7.32m x 2.72m)

Bedroom 2: 11'7 x 11'0 up to door well (3.53m x 3.36m)

Lounge: 13'4 x 13'1 (4.07m x 3.99m)

OUTSIDE

Rear Garden

Driveway Parking



Main features

- Detached bungalow close to town
- Beautifully presented throughout
- Large entrance hall and separate dining area
- Stunning enclosed garden to the rear
- Large driveway to the front offering parking for multiple vehicles
- Located within walking distance to Sandown Town and the beach



Nearest Schools

Primary Schools: Sandham Middle School 0.5 miles, Lake Middle School 1.5 miles, Forelands Middle School 3.4 miles

Secondary Schools: Sandown High School 0.7 miles,



Transport Information

Train Stations: Sandown 0.6 miles, Brading 1.2 miles, Lake 1.3 miles



Address

Avenue Road, Sandown, Isle of Wight, PO36



Directions

For directions to this property please contact us.

