



**Price**  
**£140,000**

**Leasehold**

2x  1x  1x 

**European Court, Melville  
Street, Sandown, Isle of  
Wight, PO36**

**OVER 60?**

Secure this property  
for up to **59% less!**

**Pittis**   
Helping you move forwards



## Main features

- First floor converted flat
- Successful history as a buy to let investment
- Allocated parking in adjacent private car park
- Offered to the market with no onward chain

## Accommodation

### SECOND FLOOR

Hallway

Lounge: 16'7 x 14'4 (5.06m x 4.37m)

Kitchen: 12'6 x 11'9 (3.81m x 3.58m)

Bedroom 1: 10'4 x 8'10 (3.15m x 2.69m)

Bedroom 2: 10'1 x 8'3 (3.08m x 2.52m)

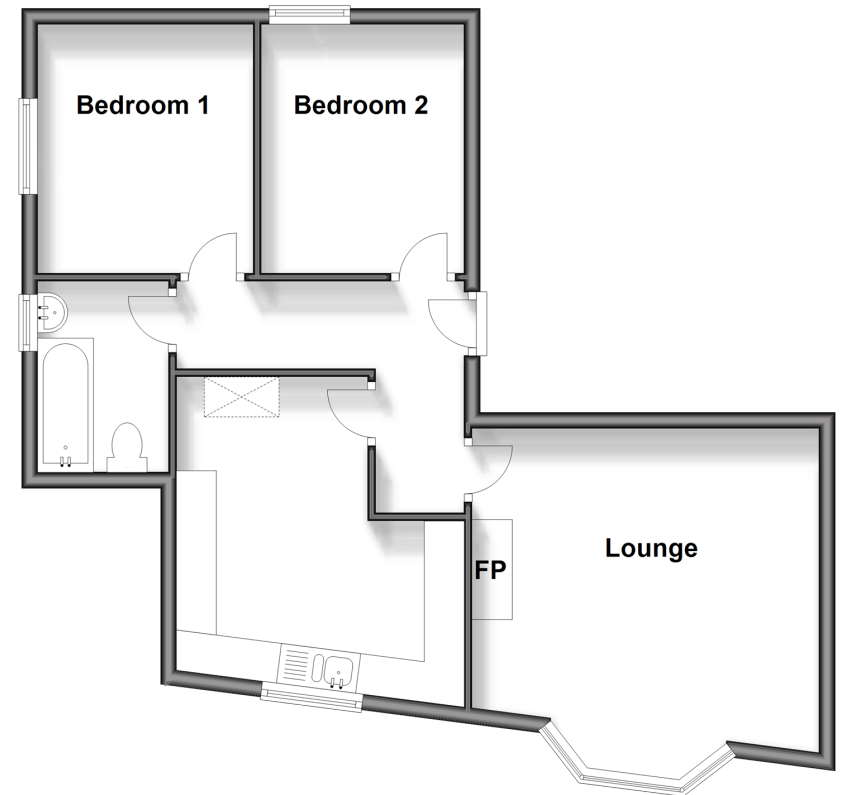
Bathroom

### OUTSIDE

Allocated Parking

### Second Floor

Approx. 56.7 sq. metres (610.2 sq. feet)



**Call Sandown - 01983 407444 ■ [pittis.co.uk](http://pittis.co.uk)**

- Legal advice should be taken to verify fixtures/fittings, planning, alterations and/or lease details
- Appliances & services are untested, dimensions are approximate and floor plans are not to scale
- Through a Homewise Home For Life Plan people aged 60+ can secure this property for up to 59% less, by purchasing a Lifetime Lease.



60520943/20240411/NR/NR