



Price

£180,000

Leasehold

2x  2x  1x 

**Ferndale Court,
Broadway, Sandown,
Isle of Wight, PO36**

OVER 60?

Secure this property
for up to **59% less!**

Pittis 
Helping you move forwards



Main features

- **First floor purpose built apartment**
- **Light and well maintained throughout with open plan living**
- **Previously used as a successful buy to let investment**
- **Communal garden with allocated parking space and private storage shed**
- **Located very close to Sandown Town with plenty of transport links and the seafront all within walking distance**

Accommodation

FIRST FLOOR

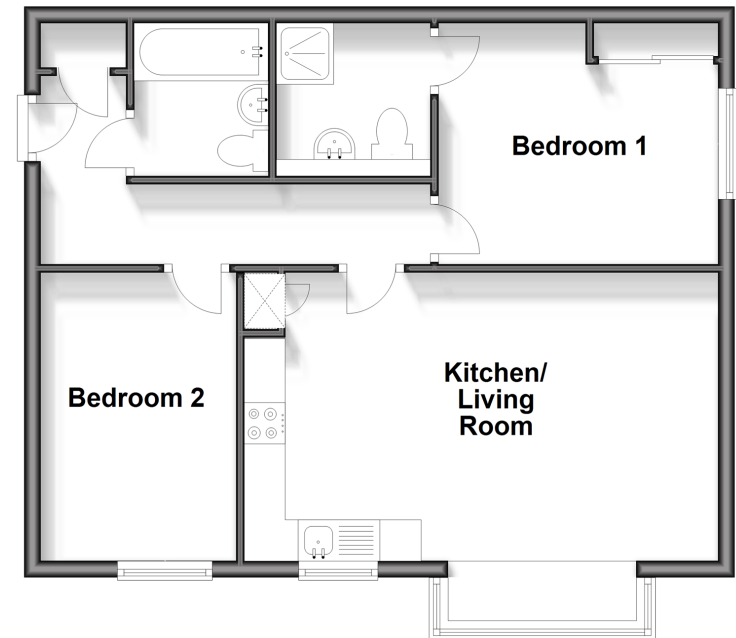
Entrance Hallway
 Kitchen/Living Room: 18'11 x 11'5 (5.77m x 3.48m)
 Bedroom 1: 11'3 x 9'7 (3.43m x 2.92m)
 En Suite Shower Room
 Bedroom 2: 11'5 x 7'11 (3.48m x 2.41m)
 Bathroom

OUTSIDE

Allocated Parking
 Communal Gardens
 Storage Shed

First Floor

Approx. 54.9 sq. metres (590.7 sq. feet)



Call Sandown - 01983 407444 ■ pittis.co.uk

- Legal advice should be taken to verify fixtures/fittings, planning, alterations and/or lease details
- Through a Homewise Home For Life Plan people aged 60+ can secure this property for up to 59% less, by purchasing a Lifetime Lease.

- Appliances & services are untested, dimensions are approximate and floor plans are not to scale



60520966/20240312/DW/NR