

OVER 60?

Secure this property
for up to **59% less!**



Price
£310,000
Freehold

2x  1x  1x 

Vinings Road, Sandown, Isle of Wight,
PO36

Pittis 
Helping you move forwards



Main features

- **Detached bungalow offered chain free**
- **Quiet location on the outskirts of town**
- **Private enclosed garden to the rear**
- **Garage and driveway with plenty of off road parking**
- **Situated within a short walking distance of town and also close by to bus stops, local shops and the beach front**

Accommodation

GROUND FLOOR

Entrance Hallway

Lounge: 12'3 x 11'4 (3.74m x 3.46m)

Kitchen: 11'4 x 9'3 (3.46m x 2.82m)

Bathroom

Bedroom 1: 12'1 x 8'9 (3.69m x 2.67m)

Bedroom 2: 8'11 x 8'4 (2.72m x 2.54m)

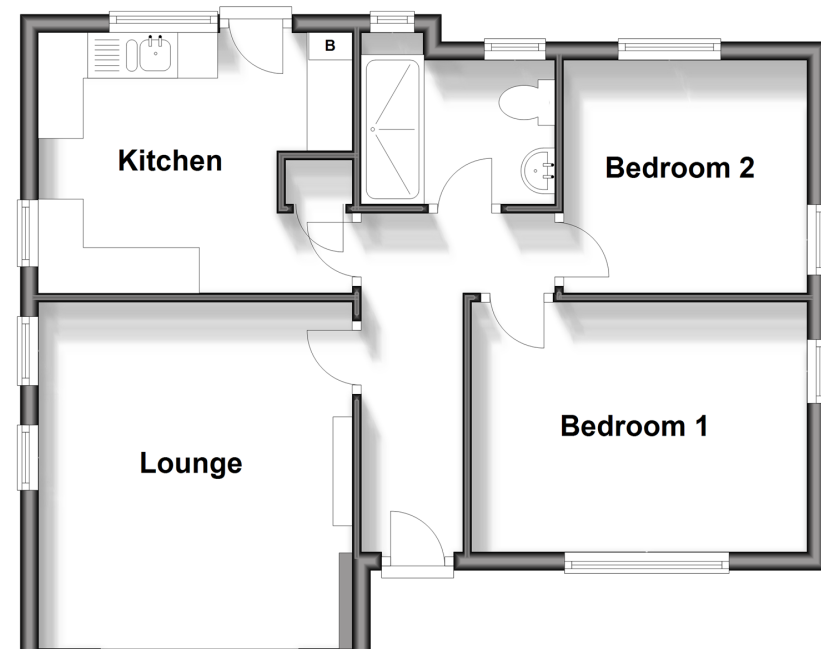
OUTSIDE

Rear Garden & Patio

Garage & Driveway

Ground Floor

Approx. 51.3 sq. metres (552.3 sq. feet)



Call Sandown - 01983 407444 ■ pittis.co.uk

- Legal advice should be taken to verify fixtures/fittings, planning, alterations and/or lease details
- Through a Homewise Home For Life Plan people aged 60+ can secure this property for up to 59% less, by purchasing a Lifetime Lease.

■ Appliances & services are untested, dimensions are approximate and floor plans are not to scale