



Price

£210,000

Leasehold

2x  2x  1x 

**Napoleons Landing,
Esplanade, Sandown,
Isle of Wight, PO36**

OVER 60?

Secure this property
for up to **59% less!**

Pittis 
Helping you move forwards



Main features

- 2 bedroom first floor purpose built apartment
- Stunning panoramic sea views to the front with a balcony
- Allocated undercover parking with storage cupboard
- In need of some modernisation throughout and offered with no onward chain

Accommodation

FIRST FLOOR

Hallway

Lounge/Dining Room: 18'4 x 14'1
(5.59m x 4.30m)

Kitchen: 13'1 x 8'1 (3.99m x 2.47m)

Bedroom 1: 17'1 x 10'5 (5.21m x 3.18m)

En Suite Shower Room

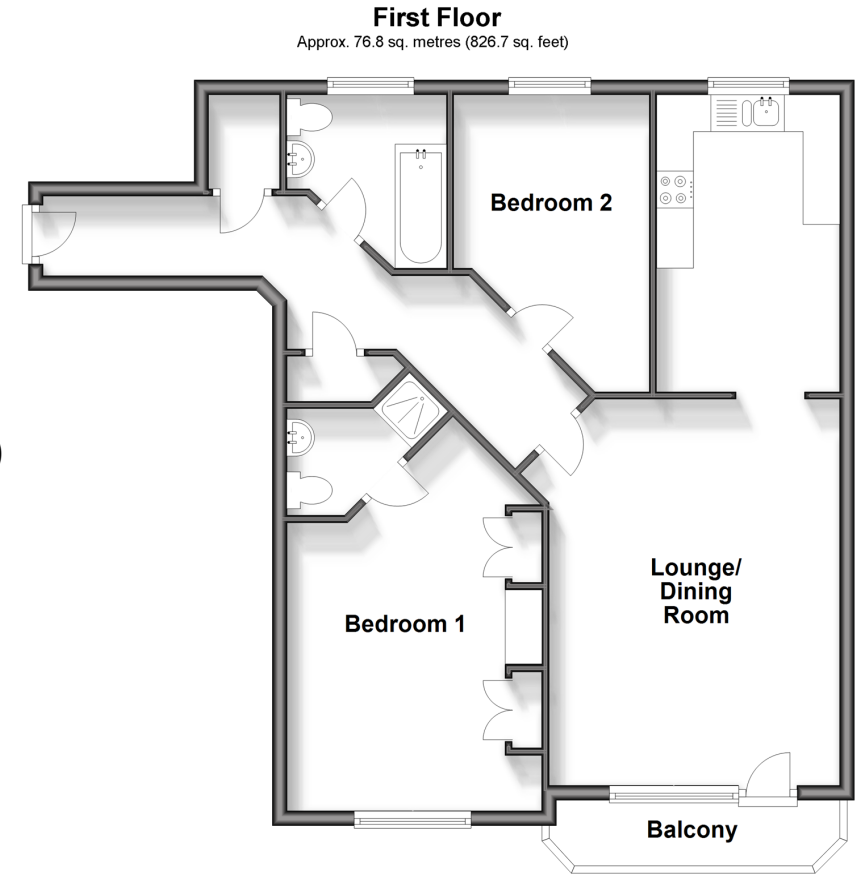
Bedroom 2: 12'7 x 8'6 (3.84m x 2.59m)

Bathroom

Balcony

OUTSIDE

Underground Parking



Call Sandown - 01983 407444 ■ pittis.co.uk

- Legal advice should be taken to verify fixtures/fittings, planning, alterations and/or lease details
- Appliances & services are untested, dimensions are approximate and floor plans are not to scale
- Through a Homewise Home For Life Plan people aged 60+ can secure this property for up to 59% less, by purchasing a Lifetime Lease.

