



OVER 60?

Secure this property
for up to **59% less!**

Price

£260,000

Freehold

2x  1x  1x 

**Hope Mead, Langbridge,
Newchurch, Sandown,
Isle of Wight, PO36**

Pittis 
Helping you move forwards



Main features

- Semi-detached house in a beautiful rural spot with stunning countryside views
- Immaculately presented and renovated throughout
- Private enclosed rear garden backing onto communal parking area private to residents of Hope Mead

Accommodation

GROUND FLOOR

Hallway

Lounge: 11'10 x 11'7 (3.61m x 3.53m)

Kitchen: 11'9 x 9'6 (3.58m x 2.90m)

FIRST FLOOR

Landing

Bedroom 1: 11'10 x 11'8 (3.61m x 3.56m)

Bedroom 2: 9'5 x 6'6 (2.87m x 1.98m)

Bathroom

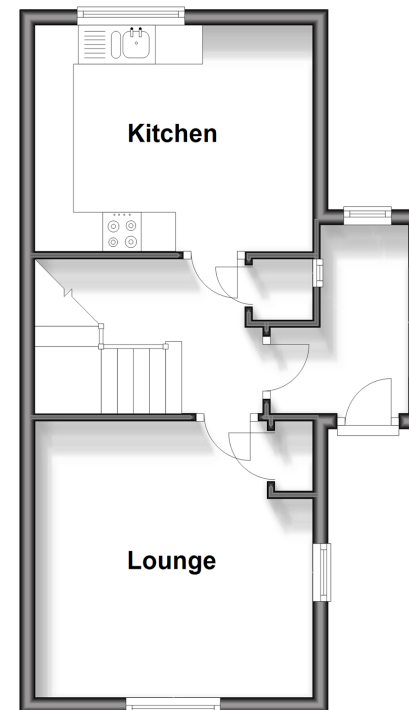
OUTSIDE

Front & Rear Garden

Communal Parking Area

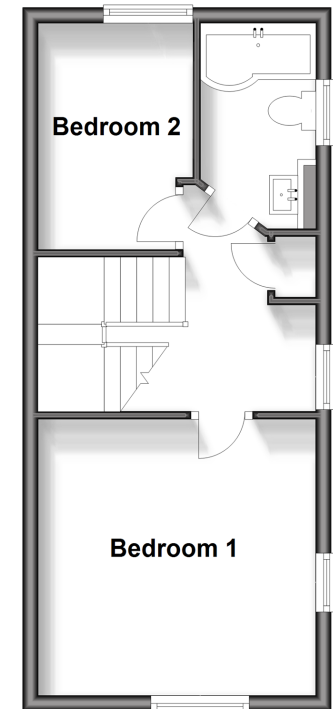
Ground Floor

Approx. 34.1 sq. metres (367.4 sq. feet)



First Floor

Approx. 31.1 sq. metres (335.0 sq. feet)



Call Sandown - 01983 407444 ■ pittis.co.uk

- Legal advice should be taken to verify fixtures/fittings, planning, alterations and/or lease details
- Appliances & services are untested, dimensions are approximate and floor plans are not to scale
- Through a Homewise Home For Life Plan people aged 60+ can secure this property for up to 59% less, by purchasing a Lifetime Lease.



60520984/20240430/NR/NR