

OVER 60?

Secure this property
for up to **59% less!**



Price
£300,000
Freehold

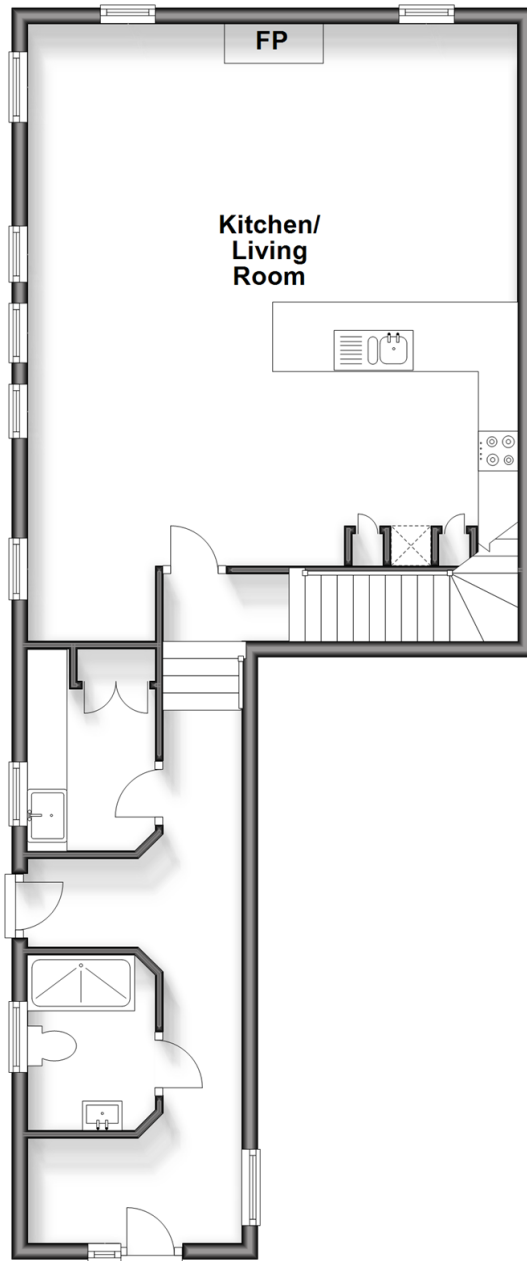
2x  2x  1x 

Newport Road, Apse Heath, Isle of Wight,
PO36

Pittis 
Helping you move forwards

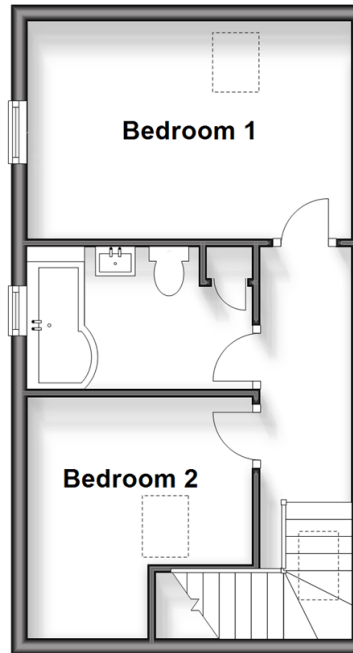
Ground Floor

Approx. 68.6 sq. metres (738.7 sq. feet)



First Floor

Approx. 31.8 sq. metres (342.7 sq. feet)



Accommodation

GROUND FLOOR

Entrance Hallway

Kitchen/Living Room: 25'2 x 20'2 (7.68m x 6.15m)

Utility Room: 8'3 x 5'1 (2.52m x 1.55m)

Shower Room

Cloakroom

FIRST FLOOR

Landing

Bedroom 1: 13'4 x 8'6 (4.07m x 2.59m)

Bedroom 2: 10'3 x 9'3 (3.13m x 2.82m)

Bathroom

OUTSIDE

Rear Garden

Allocated Parking



Main features

- Stunning character home in a rural location
- Part of a luxury former church building conversion completed in 2021
- Bespoke interior with open plan vaulted living area and feature fire place
- Private garden to the rear overlooking farmland
- Perfect life style purchase or holiday let proposition, chain free sale



Nearest Schools

Lake Middle School
Sandham Middle School
Ventnor Middle School
Sandown High School
Priory School



Transport Information

Local buses with Islandwide connections, plus local train station with direct links to Ryde Pier Head.



Address

Newport Road, Apse Heath, Isle of Wight, PO36



Directions

For directions to this property please contact us.

