

OVER 60?

Secure this property
for up to **59% less!**



Price

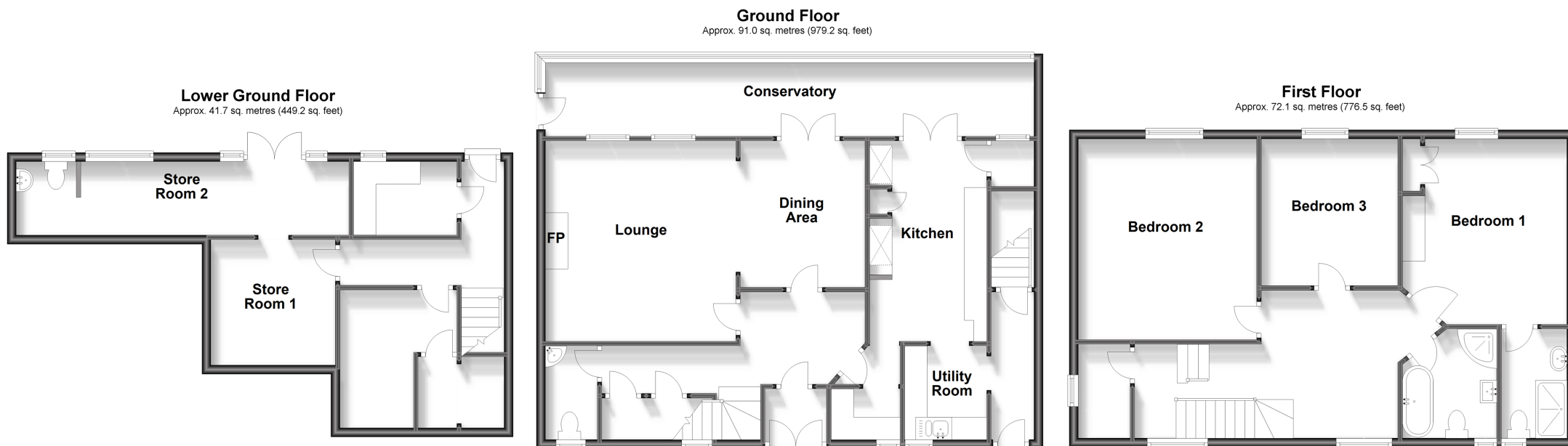
£475,000

Freehold

3x  2x  2x 

Church Road, Shanklin, Isle of Wight, PO37

Pittis 
Helping you move forwards



Accommodation

GROUND FLOOR

Entrance Hall
Cloakroom
Dining Area: 10'0 x 9'8 (3.05m x 2.95m)
Lounge: 14'6 x 13'0 (4.42m x 3.97m)
Kitchen: 15'1 x 9'0 (4.60m x 2.75m)
Utility Room: 6'6 x 5'11 (1.98m x 1.80m)
Conservatory: 37'0 x 5'9 (11.29m x 1.75m)

FIRST FLOOR

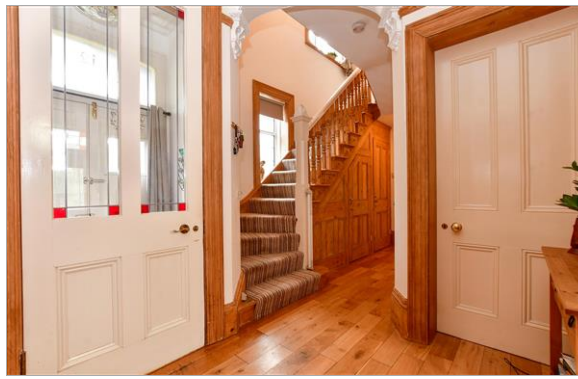
Landing
Bedroom 1: 12'11 x 12'10 (3.94m x 3.91m)
En Suite Shower Room
Bedroom 2: 10'4 x 9'7 (3.15m x 2.92m)
Bedroom 3: 14'6 x 13'0 (4.42m x 3.97m)
Bathroom

LOWER GROUND FLOOR

Store Room 1: 9'1 x 7'11 (2.77m x 2.41m)
Store Room 2: 18'7 x 5'5 (5.67m x 1.65m)
Work Shop area
Cloakroom

OUTSIDE

Terraced Rear Garden
Gravel Seating and Patio area



Main features

- Stunning period home in the heart of Shanklin Old Village
- Spacious accommodation over 3 floors with character features
- Mature landscaped gardens to the rear backing onto the Chine
- Short walk to island attractions including Rylestone Gardens & Big Mead



Nearest Schools

The Bay CE School
Broadlea Primary School
Shanklin C of E Primary Schools
Gatten & Lake Primary School
Shanklin Pre-School & Nursery



Transport Information

Local buses providing Islandwide connections plus local train station with direct links to Ryde Pier Head.



Address

Church Road, Shanklin, Isle of Wight, PO37



Directions

For directions to this property please contact us.

