



**Price**  
**£585,000**

**Freehold**

5x  2x  1x 

**Alverstone Road, Apse  
Heath, Sandown, Isle of  
Wight, PO36**

**OVER 60?**

Secure this property  
for up to **59% less!**

**Pittis**   
Helping you move forwards

## Accommodation

### GROUND FLOOR

Hallway

Lounge: 17'0 x 16'7 (5.19m x 5.06m)

Kitchen/Dining Area: 24'0 x 11'8 (7.32m x 3.56m)

Sun Room: 13'3 x 13'0 (4.04m x 3.97m)

Utility Room: 8'8 x 8'5 (2.64m x 2.57m)

Cloakroom

### FIRST FLOOR

Landing

Bedroom 1: 13'1 x 13'1 (3.99m x 3.99m)

En Suite Shower Room

Bedroom 2: 14'2 x 8'6 (4.32m x 2.59m)

Bedroom 3: 12'11 x 7'9 (3.94m x 2.36m)

Bedroom 4: 15'10 x 9'7 (4.83m x 2.92m)

Bedroom 5: 8'7 x 8'6 (2.62m x 2.59m)

Bathroom

### OUTDOOR

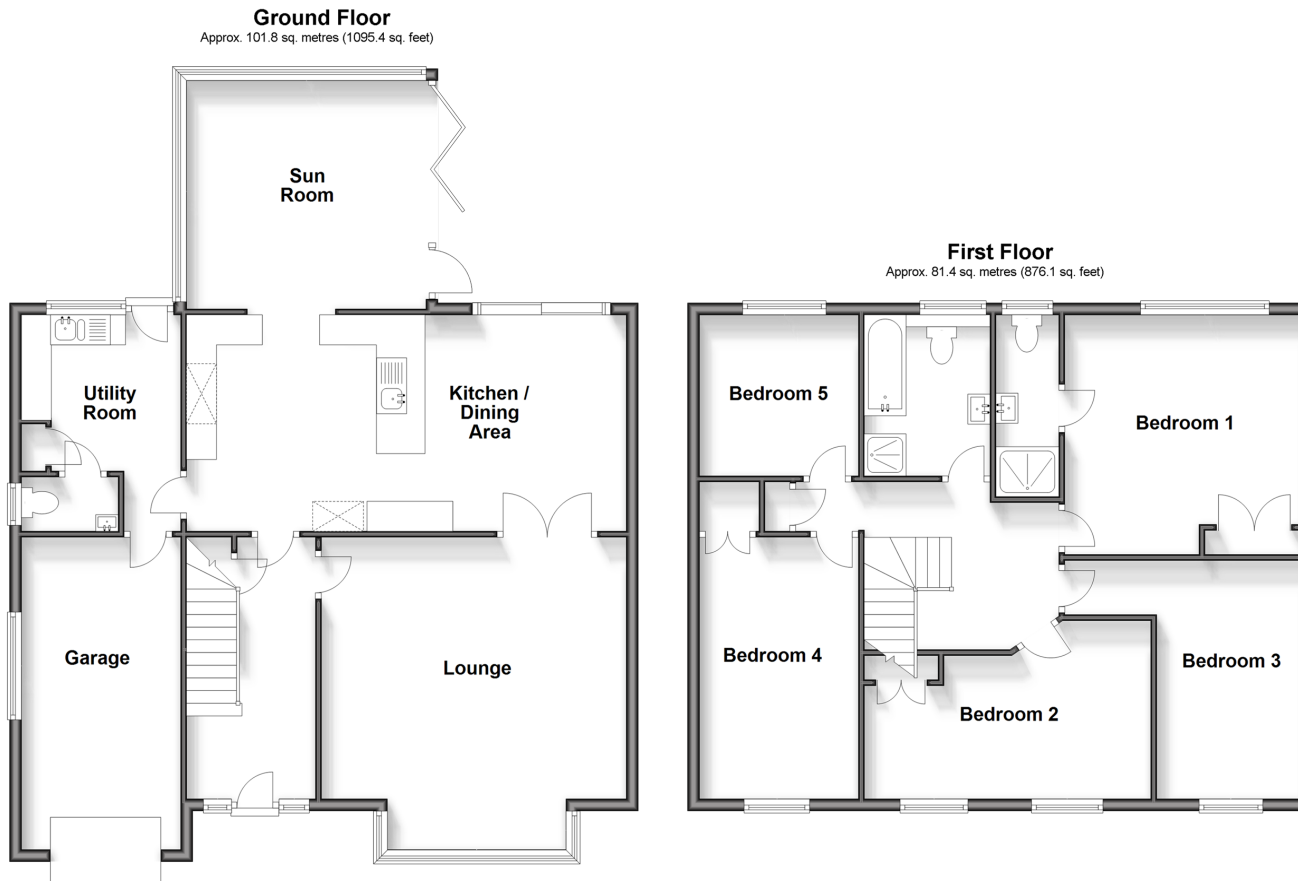
Blocked Paved Driveway

Garage

Rear Garden with Shed/Workshop

Patio Entertainment Area

Slate Seating Area







## Main features

- Detached house in the rural hamlet of Winford with sociable open plan kitchen/dining room
- Sun room leading to a wonderful outdoor entertainment area with gorgeous gardens
- Spacious living room with separate cloakroom & utility room
- Immaculately presented throughout with family bathroom and en suite shower
- Integral garage with block paved driveway



### Nearest Schools

The Bay CE School  
Broadlea Primary School  
Shanklin C of E Primary Schools  
Gatten & Lake Primary School  
Shanklin Pre-School & Nursery



### Transport Information

Local buses providing Islandwide connections.



### Address

Alverstone Road, Apse Heath, Sandown, Isle of Wight, PO36



### Directions

For directions to this property please contact us.



