

OVER 60?

You could get up to
59% off the price!*



Price
£475,000
Freehold

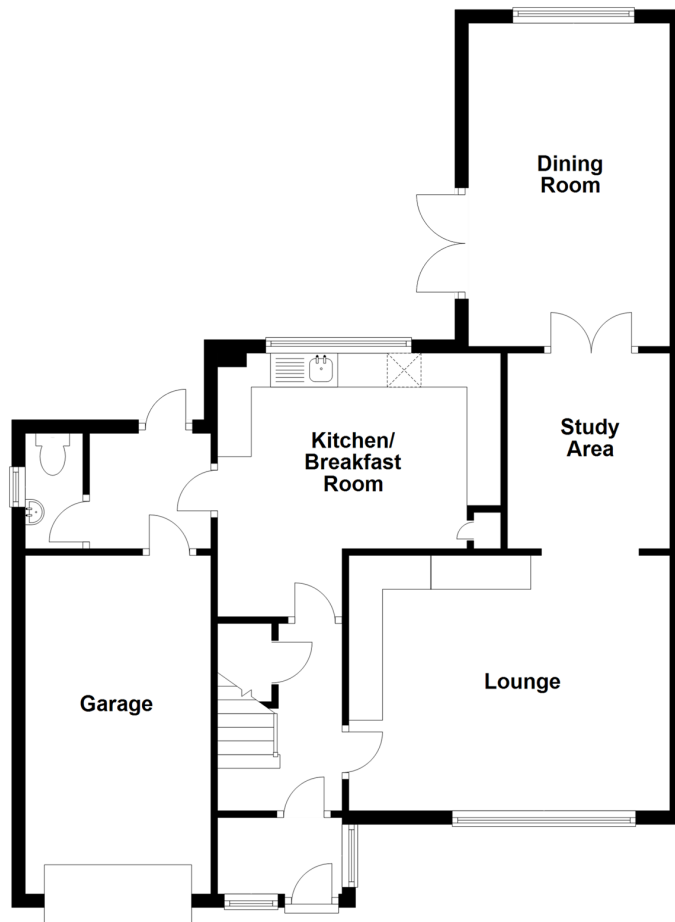
4x  2x  3x 

Lark Rise, Shanklin, Isle of Wight, PO37

Pittis 
Helping you move forwards

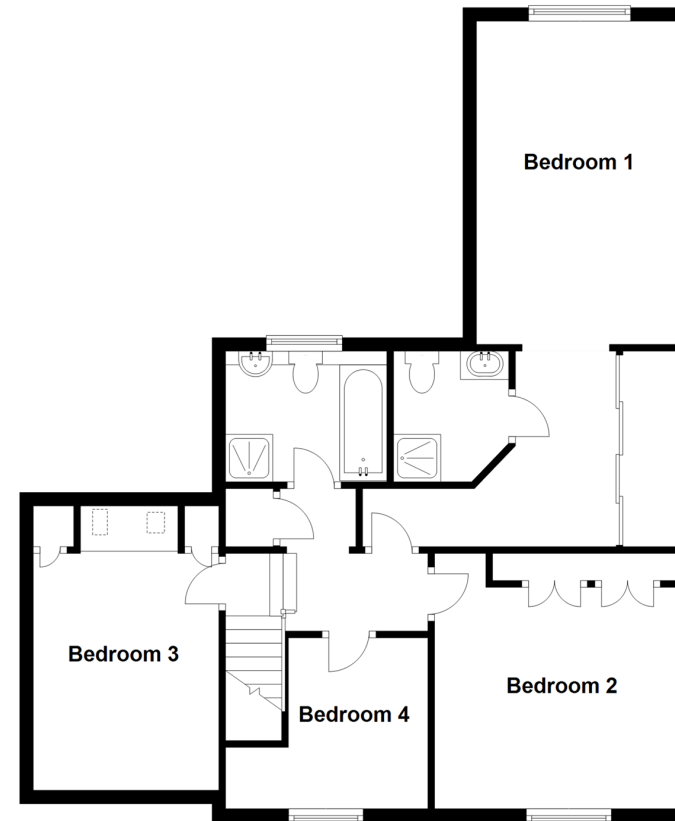
Ground Floor

Approx. 81.7 sq. metres (879.1 sq. feet)



Split Level First Floor

Approx. 72.0 sq. metres (774.5 sq. feet)



Accommodation

GROUND FLOOR

Entrance Porch

Entrance Hall

Lounge: 15'8 x 12'3 (4.78m x 3.74m)

Study Area: 9'5 x 7'10 (2.87m x 2.39m)

Dining Room: 15'9 x 9'9 (4.80m x 2.97m)

Kitchen / Breakfast Room: 13'10 x 12'1 (4.22m x 3.69m)

Utility Room: 5'9 x 5'6 (1.75m x 1.68m)

Cloakroom

SPLIT LEVEL FIRST FLOOR

Landing

Bedroom 1: 15'9 x 9'9 (4.80m x 2.97m)

Dressing Area: 9'6 x 7'6 (2.90m x 2.29m)

En-Suite Shower Room

Bedroom 2: 12'3 x 11'8 (3.74m x 3.56m)

Bedroom 3: 11'0 x 9'1 (3.36m x 2.77m)

Bedroom 4: 8'3 x 6'9 (2.52m x 2.06m)

Bathroom

OUTSIDE

Front Garden

Rear Garden

Driveway Parking

Summer House

Swimming Pool: 24'0 x 12'0 (7.32m x 3.66m)

Integral Garage



Main features

- Executive detached house in select cul-de-sac on the outskirts of Shanklin
- Swimming pool, summer house and large gardens to rear
- Extended accommodation now offers plenty of living and bedroom space
- Utility area and cloakroom, integral garage
- Bedroom 1 has en-suite shower room and dressing area



Nearest Schools

Shanklin C of E Primary School
Gatten & Lake Primary School
Broadlea Primary School
Newchurch Primary School
The Bay CE Secondary School



Transport Information

Local bus routes providing Islandwide connections



Address

Lark Rise, Shanklin, Isle of Wight, PO37



Directions

For directions to this property please contact us.

