

OVER 60?

Secure this property
for up to **59% less!**



Price

£535,000

Freehold

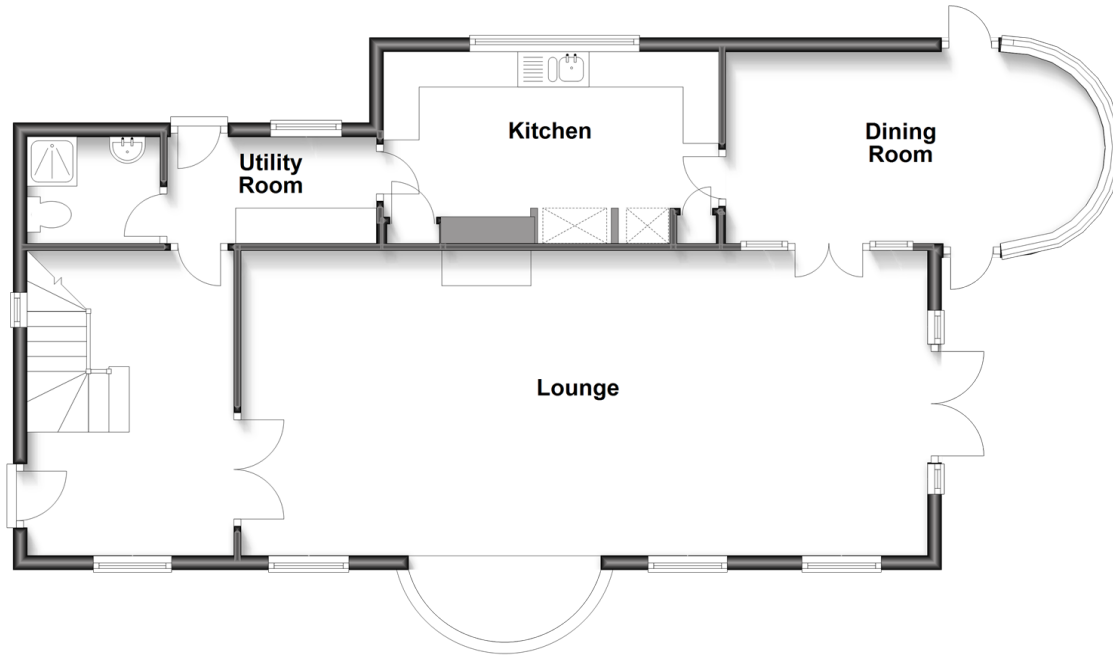
5x  3x  2x 

Orchard Lodge, Chatsworth Avenue,
Shanklin, Isle of Wight, PO37

Pittis 
Helping you move forwards

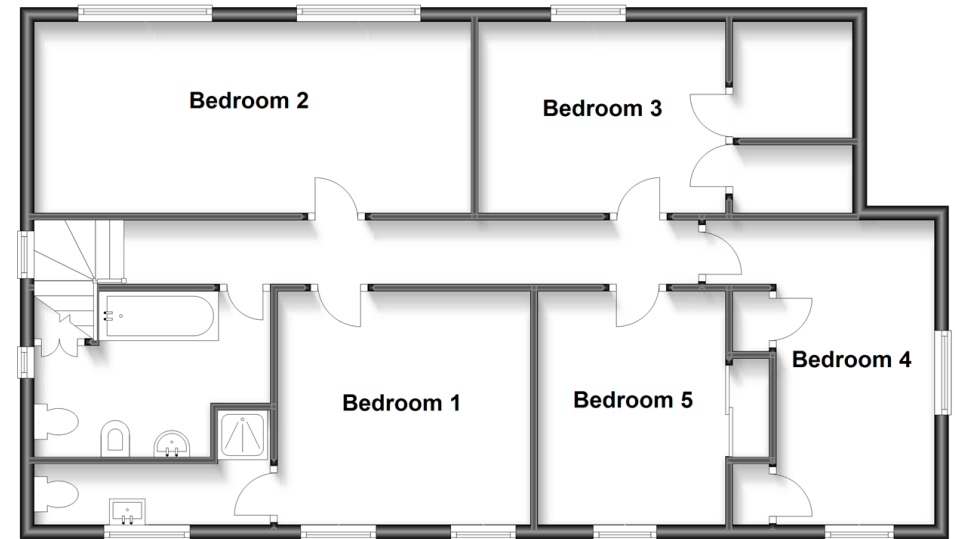
Ground Floor

Approx. 87.7 sq. metres (943.7 sq. feet)



First Floor

Approx. 86.9 sq. metres (935.5 sq. feet)



Accommodation

GROUND FLOOR

Entrance Hall

Lounge: 31'8 x 14'2 (9.66m x 4.32m)

Dining Room: 19'0 maximum x 8'10 (5.80m x 2.69m)

Kitchen: 15'5 x 8'9 (4.70m x 2.67m)

Utility Room: 9'8 x 4'10 (2.95m x 1.47m)

Shower Room

FIRST FLOOR

Landing

Bedroom 1: 11'7 x 10'11 (3.53m x 3.33m)

En-Suite Shower Room

Bedroom 2: 20'0 x 8'11 (6.10m x 2.72m)

Bedroom 3: 11'0 x 8'10 (3.36m x 2.69m)

Bedroom 4: 14'2 x 8'2 (4.32m x 2.49m)

Bedroom 5: 10'11 x 8'4 (3.33m x 2.54m)

Bathroom

OUTSIDE

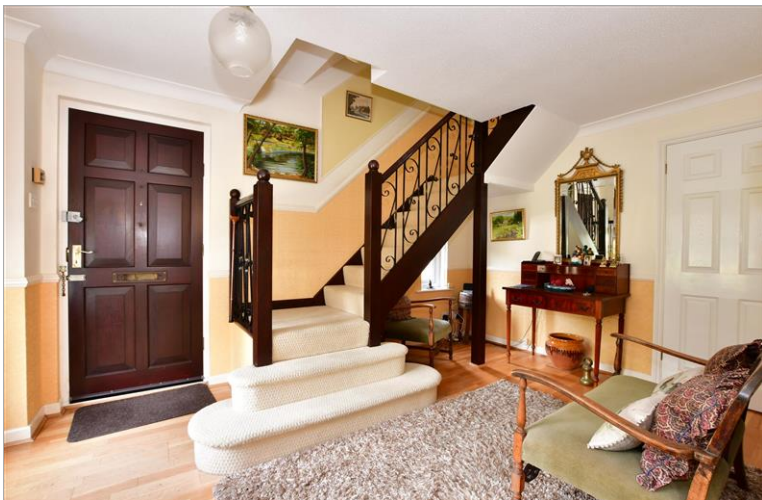
Front Garden

Rear Garden

Double Garage

Driveway

Off Road Parking



Main features

- Exceptionally spacious detached Georgian styled detached house
- Stunning lounge with separate dining room
- Large detached double garage and plenty of parking
- Wrap around gardens which are manageable and easy to maintain
- An elegant family home that has been well cared for by it's only owner for the past 42 years



Nearest Schools

Shanklin C of E Primary School
Gatten & Lake Primary School
Broadlea Primary School
Newchurch Primary School
The Bay CE Secondary School



Transport Information

Local bus routes providing Islandwide connections plus local train station with direct links to Ryde Pier Head and the mainland.



Address

Orchard Lodge, Chatsworth Avenue, Shanklin, Isle of Wight, PO37



Directions

For directions to this property please contact us.

