



OVER 60?

Secure this property
for up to **59% less!**

Price

£260,000

Leasehold

4x  1x  2x 

**Spring Gardens,
Shanklin, Isle of Wight,
PO37**

Pittis 
Helping you move forwards



Main features

- **Spacious character house in the heart of Shanklin**
- **Accommodation arranged over three floors**
- **Short walk to town and beach**
- **Easy to manage low maintenance garden**
- **Lovely period family home**

Accommodation

GROUND FLOOR

Entrance Hall

Lounge: 13'3 x 12'6 (4.04m x 3.81m)

Bedroom 4: 12'0 x 11'5 (3.66m x 3.48m)

Ground Floor Cloakroom

LOWER GROUND FLOOR

Lobby

Bathroom

Dining Room: 11'11 x 11'5 (3.63m x 3.48m)

Kitchen: 12'4 x 11'2 (3.76m x 3.41m)

Cloakroom

FIRST FLOOR

Landing

Bedroom 1: 14'10 into bay x 11'5 (4.52m x 3.48m)

Bedroom 2: 12'0 x 11'5 (3.66m x 3.48m)

Bedroom 3: 7'9 x 5'10 (2.36m x 1.78m)

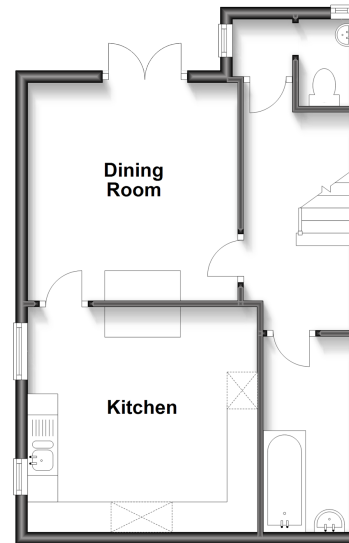
OUTSIDE

Front Garden

Rear courtyard garden

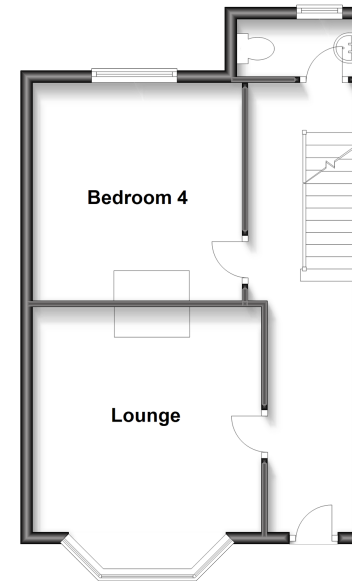
Lower Ground Floor

Approx. 42.0 sq. metres (452.0 sq. feet)



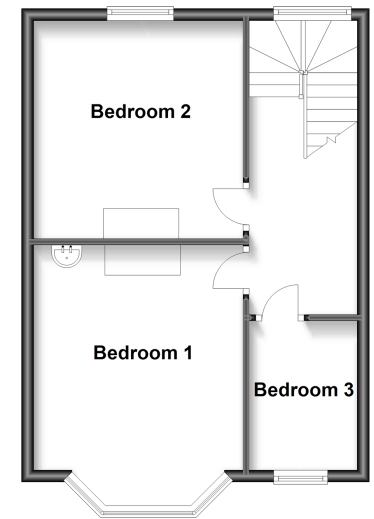
Ground Floor

Approx. 42.4 sq. metres (456.8 sq. feet)



First Floor

Approx. 40.3 sq. metres (434.1 sq. feet)



Call Shanklin - 01983 868777 ■ pittis.co.uk

■ Legal advice should be taken to verify fixtures/fittings, planning, alterations and/or lease details
 ■ Through a Homewise Home For Life Plan people aged 60+ can secure this property for up to 59% less, by purchasing a Lifetime Lease.

■ Appliances & services are untested, dimensions are approximate and floor plans are not to scale



60619857/20230523/CS/CS