



OVER 60?

Secure this property
for up to **59% less!**

Price

£235,000

Freehold

2x  1x  2x 

**Garfield Road, Shanklin,
Isle of Wight, PO37**

Pittis 
Helping you move forwards



Main features

- Semi detached older style house arranged over 3 floors
- Modernised interior with a bespoke finish
- Lower ground floor with useful cellar for storage space
- Good sized rear garden with small parking area to the front

Accommodation

GROUND FLOOR

Hallway
Cloakroom
Lounge: 12'0 x 11'11 (3.66m x 3.63m)
Dining Room: 10'5 x 9'0 (3.18m x 2.75m)

LOWER GROUND FLOOR

Hallway
Kitchen: 8'10 x 8'10 (2.69m x 2.69m)
Cellar: 12'0 x 12'0 (3.66m x 3.66m)

FIRST FLOOR

Landing
Bedroom 1: 12'0 x 10'11 (3.66m x 3.33m)
Shower Room
Bedroom 2: 9'1 x 7'7 (2.77m x 2.31m)

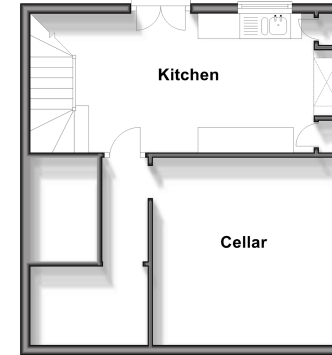
OUTSIDE

Off Road Parking to the front
Rear Garden
Outside Toilet

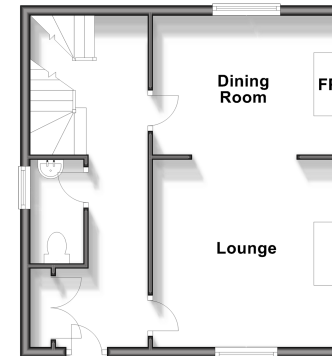
Call Shanklin - 01983 868777 ■ pittis.co.uk

- If buying to let, the energy rating will need to be improved to at least 'E' rating before you can let the property
- Legal advice should be taken to verify fixtures/fittings, planning, alterations and/or lease details
- Appliances & services are untested, dimensions are approximate and floor plans are not to scale
- Through a Homewise Home For Life Plan people aged 60+ can secure this property for up to 59% less, by purchasing a Lifetime Lease.

Lower Ground Floor
Approx. 39.7 sq. metres (427.7 sq. feet)



Ground Floor
Approx. 39.7 sq. metres (427.7 sq. feet)



First Floor
Approx. 39.7 sq. metres (427.7 sq. feet)

