



**Price**

**£375,000**

**Leasehold**

3x  2x  1x 

**The Reach, Luccombe  
Road, Shanklin, Isle of  
Wight, PO37**

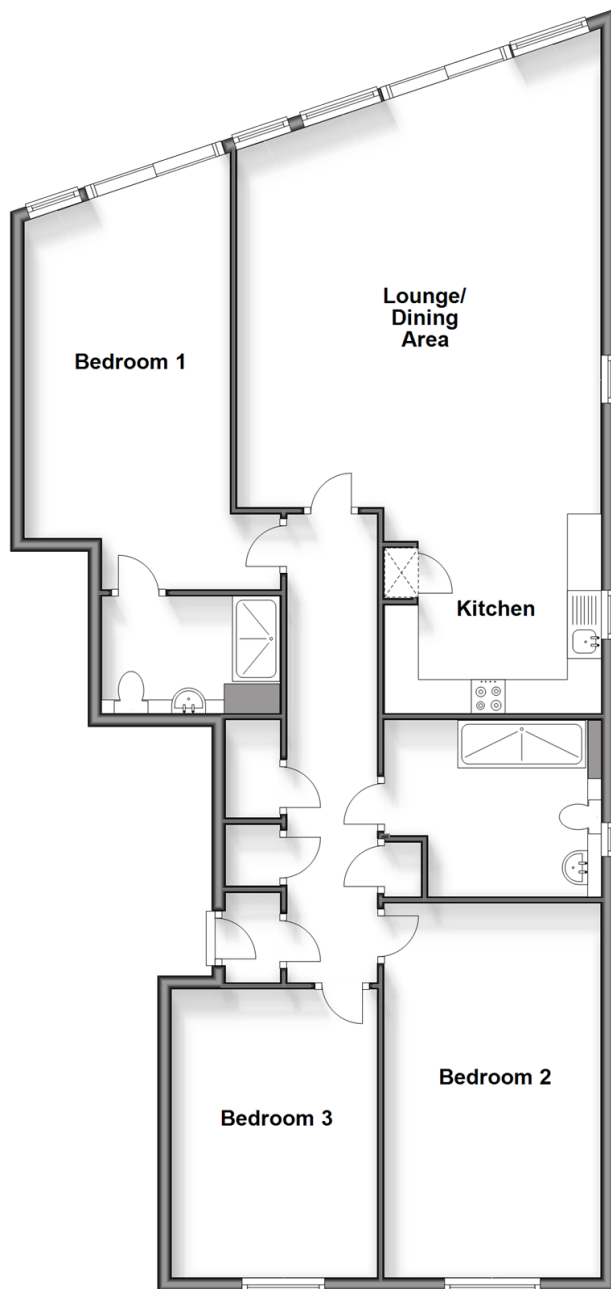
**OVER 60?**

Secure this property  
for up to **59% less!**

**Pittis**   
Helping you move forwards

## Ground Floor

Approx. 120.4 sq. metres (1295.8 sq. feet)



## Accommodation

### GROUND FLOOR

Entrance Hall

Lounge/Dining Area: 18'7 x 17'8 (5.67m x 5.39m)

Kitchen: 10'6 x 8'10 (3.20m x 2.69m)

Bedroom 1: 19'10 x 9'11 (6.05m x 3.02m)

En Suite Shower Room

Bedroom 2: 18'0 x 10'5 (5.49m x 3.18m)

Bedroom 3: 14'0 x 10'0 (4.27m x 3.05m)

Shower Room

### OUTSIDE

Private Undercover Terrace

Communal Gardens

Undercover Parking Space

Outside Store Cupboard





## Main features

- Stunning ground floor apartment in this landmark building overlooking the bay
- Idyllic location with breathtaking views from your own private undercover terrace
- Huge open plan glass fronted living space
- High specification throughout, allocated undercover parking space
- En suite shower room, offered chain free



### Nearest Schools

Primary Schools:  
Lake Middle School 2.0  
Sandham Middle School  
Ventnor Middle School



### Transport Information

Local buses providing Islandwide connections, plus local train station with direct links to Ryde Pier Head.



### Address

The Reach, Luccombe Road, Shanklin, Isle of Wight, PO37



### Directions

For directions to this property please contact us.



