



**Price**  
**£290,000**

**Freehold**

2x  1x  2x 

**Newport Road, Ventnor,  
Isle of Wight, PO38**

**Pittis**   
Helping you move forwards





## Main features

- Detached bungalow in village location
- In need of upgrading and modernisation throughout
- Potential to extend or convert loft subject to planning permission
- Good sized gardens to the front & rear

## Accommodation

### GROUND FLOOR

Hallway

Kitchen: 12'5 x 8'11 (3.79m x 2.72m)

Bathroom

Lounge: 15'10 x 14'10 (4.83m x 4.52m)

Bedroom 1: 14'3 x 9'9 (4.35m x 2.97m)

Bedroom 2: (L-shaped) 14'1 maximum x 9'10 maximum (4.30m x 3.00m) plus 9'10 minimum x 5'9 minimum (3.00m x 1.75m)

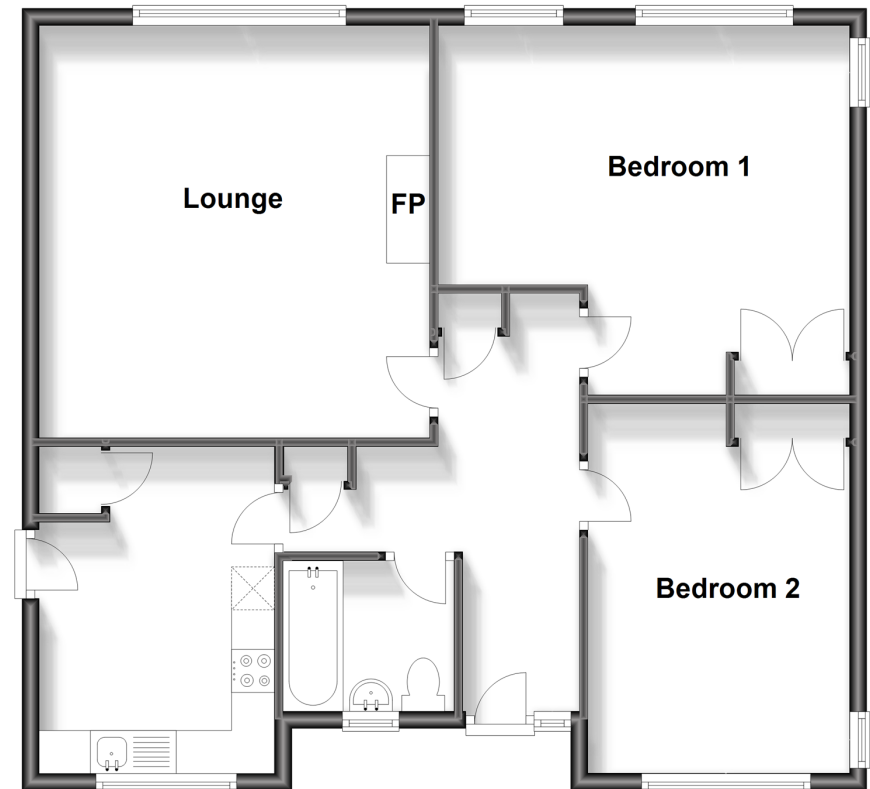
### OUTSIDE

Front & Rear Gardens

Garage & Driveway

## Ground Floor

Approx. 79.5 sq. metres (855.7 sq. feet)



**Call Shanklin - 01983 868777 ■ [pittis.co.uk](http://pittis.co.uk)**

- Legal advice should be taken to verify fixtures/fittings, planning, alterations and/or lease details
- Appliances & services are untested, dimensions are approximate and floor plans are not to scale



60620009/20240115/CS/CS