



**OVER 60?**

Secure this property  
for up to **59% less!**

**Price**

**£270,000**

**Freehold**

2x  1x  1x 

**Woodhall Drive, Lake,  
Isle of Wight, PO36**

**Pittis**   
Helping you move forwards





## Main features

- Detached bungalow at the bottom of Merrie Garden Estate
- Level walk to local shops and bus route
- Conservatory to the rear and modern fitted kitchen
- Garage and block paved driveway to the front

## Accommodation

### GROUND FLOOR

Porch

Lounge: 12'1 x 10'8 (3.69m x 3.25m)

Kitchen: 10'8 x 9'2 (3.25m x 2.80m)

Side Porch: 10'7 x 4'1 (3.23m x 1.25m)

Conservatory: 9'9 x 7'10 (2.97m x 2.39m)

Bedroom 1: 10'4 x 9'5 (3.15m x 2.87m)

Bedroom 2: 9'7 x 7'3 (2.92m x 2.21m)

Shower Room

### OUTSIDE

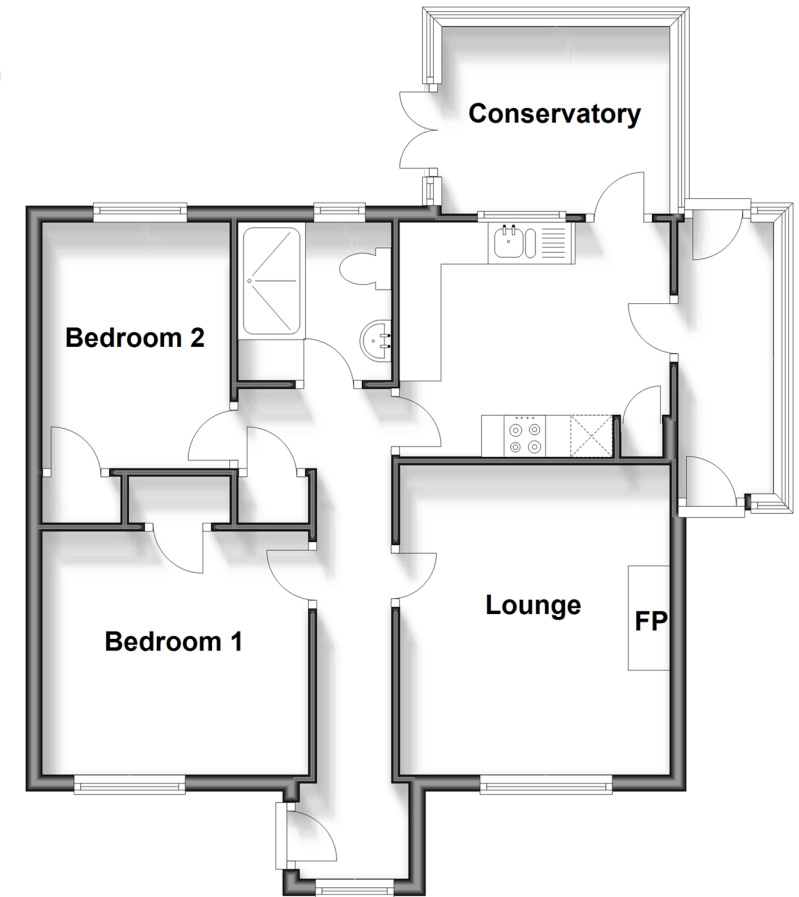
Front Block Paved Driveway

Garage with Electric door

Rear Garden

## Ground Floor

Approx. 62.1 sq. metres (668.6 sq. feet)



**Call Shanklin - 01983 868777 ■ [pittis.co.uk](http://pittis.co.uk)**

- Legal advice should be taken to verify fixtures/fittings, planning, alterations and/or lease details
- Appliances & services are untested, dimensions are approximate and floor plans are not to scale
- Through a Homewise Home For Life Plan people aged 60+ can secure this property for up to 59% less, by purchasing a Lifetime Lease.



60620010/20240426/CS/CS