



**Price**

**£190,000**

**Freehold**

2x  1x  1x 

**Yarborough Road,  
Wroxall, Ventnor, Isle of  
Wight, PO38**

**OVER 60?**

Secure this property  
for up to **59% less!**

**Pittis**   
Helping you move forwards





## Main features

- Modern end of terrace house in village location
- New electric heating system, double glazed windows
- En bloc garage & good sized gardens
- Well presented throughout & just a short walk to local schools & shops
- Ideal first time buyer property

## Accommodation

### GROUND FLOOR

Hallway  
Lounge/Dining Room: 23'3 x 10'11 (7.09m x 3.33m)  
Kitchen: 11'8 x 7'10 (3.56m x 2.39m)

### FIRST FLOOR

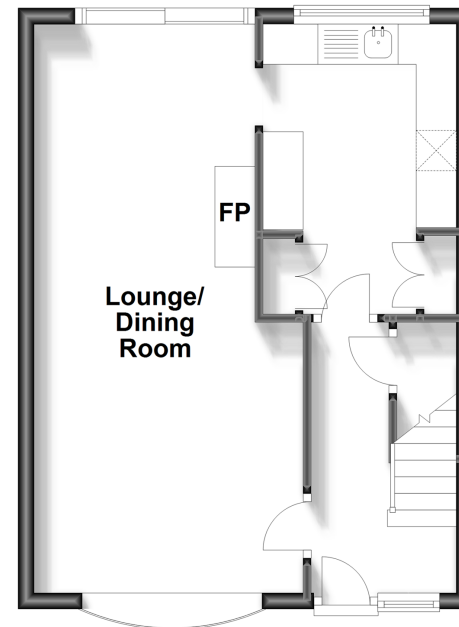
Landing  
Bedroom 1: 14'4 x 11'1 (4.37m x 3.38m)  
Bedroom 2: 11'8 x 9'1 (3.56m x 2.77m)  
Bathroom

### OUTSIDE

Garage en bloc  
Front & Rear Gardens

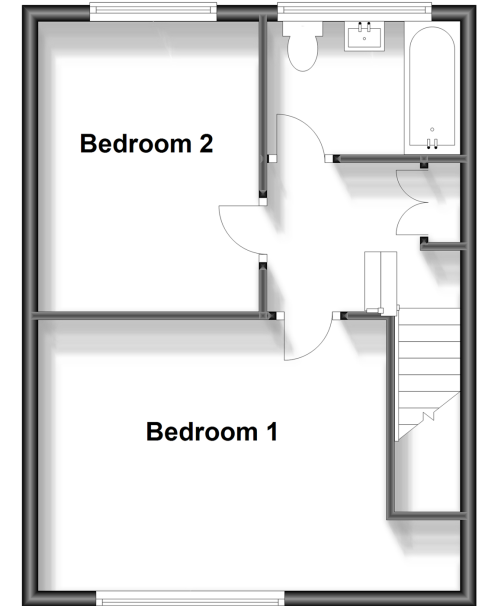
### Ground Floor

Approx. 37.4 sq. metres (403.0 sq. feet)



### First Floor

Approx. 37.2 sq. metres (400.1 sq. feet)



Call Shanklin - 01983 868777 ■ [pittis.co.uk](http://pittis.co.uk)

■ Legal advice should be taken to verify fixtures/fittings, planning, alterations and/or lease details  
■ Through a Homewise Home For Life Plan people aged 60+ can secure this property for up to 59% less, by purchasing a Lifetime Lease.

■ Appliances & services are untested, dimensions are approximate and floor plans are not to scale



60620019/20240129/CS/CS