



**OVER 60?**

Secure this property  
for up to **59% less!**

**Price**

**£150,000**

**Leasehold**

2x  1x  1x 

**Forest Court, Forest  
Way, Winford, Sandown,  
Isle of Wight, PO36**

**Pittis**   
Helping you move forwards





## Main features

- First floor maisonette in this desirable area of Winford
- Lovely views over adjacent woodland
- Allocated parking space
- Extended lease and communal gardens
- Good decorative order throughout

## Accommodation

### FIRST FLOOR

Hallway

Lounge: 14'11 x 9'11 (4.55m x 3.02m)

Inner Hallway

Shower Room

Kitchen: 8'2 x 6'10 (2.49m x 2.08m)

Bedroom 1: 11'0 x 10'2 (3.36m x 3.10m)

Bedroom 2: 10'6 x 6'10 (3.20m x 2.08m)

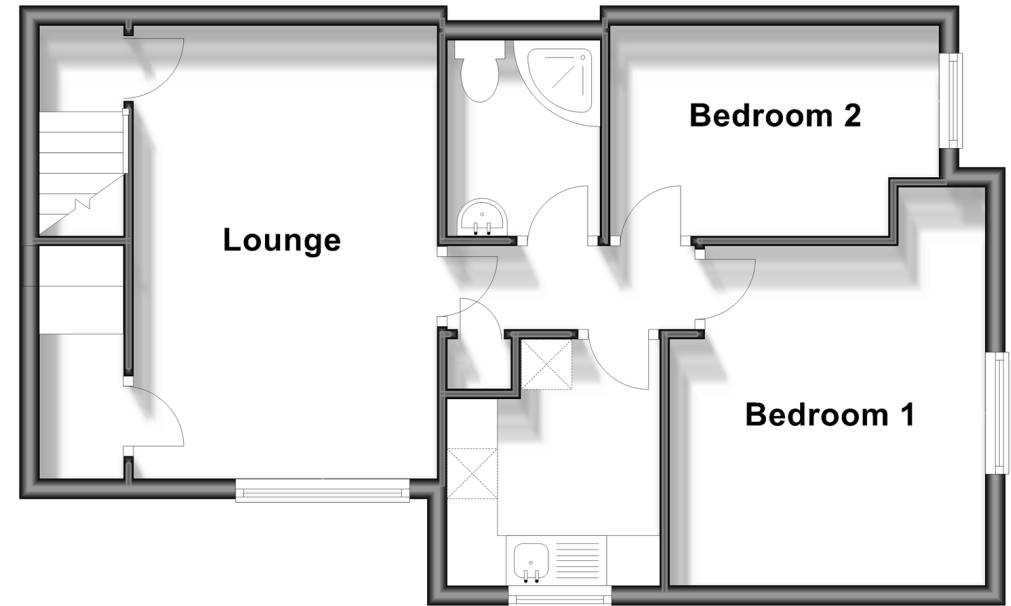
### OUTSIDE

Allocated Parking

Communal Gardens

## First Floor

Approx. 47.4 sq. metres (510.3 sq. feet)



**Call Shanklin - 01983 868777 ■ [pittis.co.uk](http://pittis.co.uk)**

- Legal advice should be taken to verify fixtures/fittings, planning, alterations and/or lease details
- Through a Homewise Home For Life Plan people aged 60+ can secure this property for up to 59% less, by purchasing a Lifetime Lease.

- Appliances & services are untested, dimensions are approximate and floor plans are not to scale