

**OVER 60?**

Secure this property  
for up to **59% less!**



**Price**  
**£280,000**  
**Freehold**

2x  1x  1x 

Stenbury View, Wroxall, Isle of Wight,  
PO38

**Pittis**   
Helping you move forwards





## Main features

- Stunning semi detached bungalow in a quiet cul de sac location
- Gorgeous countryside views, within a short walk to village amenities
- Immaculately presented throughout with conservatory to the rear
- Log burner in the lounge & gas central heating throughout

## Accommodation

### GROUND FLOOR

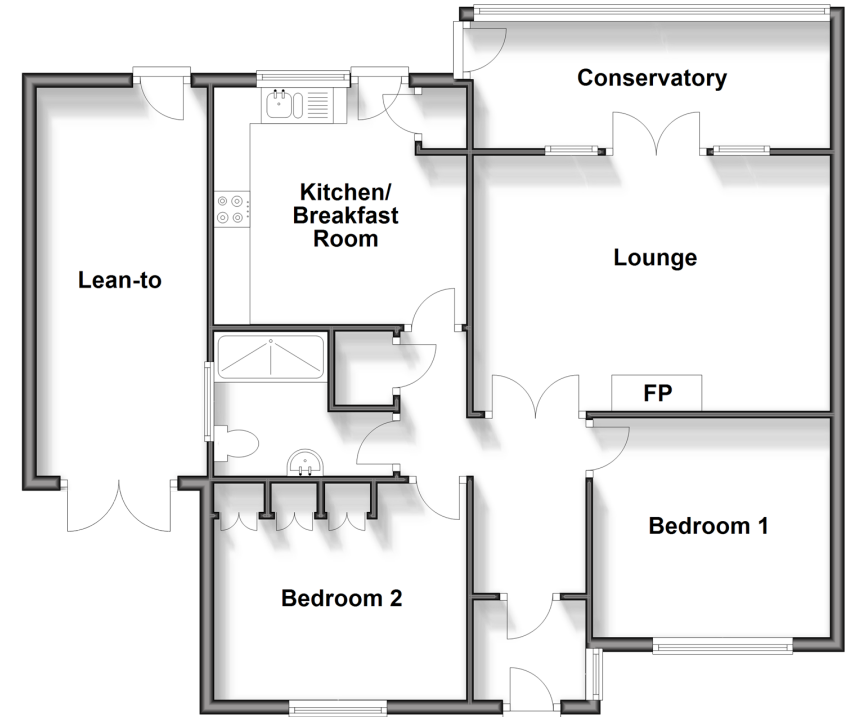
Porch  
Hallway  
Lounge: 15'11 x 11'9 (4.85m x 3.58m)  
Conservatory: 15'0 x 5'0 (4.58m x 1.53m)  
Kitchen / Breakfast Room: 11'4 x 10'11 (3.46m x 3.33m)  
Bedroom 1: 10'7 x 9'11 (3.23m x 3.02m)  
Bedroom 2: 11'4 x 9'9 (3.46m x 2.97m)  
Shower Room

### OUTSIDE

Front & Rear Gardens  
Driveway  
Lean to Storage Area: 19'0 x 7'4 (5.80m x 2.24m)

### Ground Floor

Approx. 87.3 sq. metres (940.0 sq. feet)



**Call Shanklin - 01983 868777 ■ [pittis.co.uk](http://pittis.co.uk)**

- Legal advice should be taken to verify fixtures/fittings, planning, alterations and/or lease details
- Appliances & services are untested, dimensions are approximate and floor plans are not to scale
- Through a Homewise Home For Life Plan people aged 60+ can secure this property for up to 59% less, by purchasing a Lifetime Lease.



60620066/20240308/CS/CS